

\$239,990 - 804 9707 105 Street, Edmonton

MLS® #E4407911

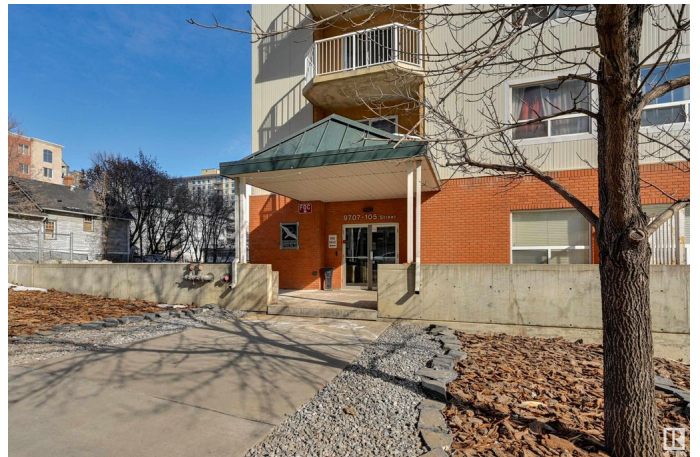
\$239,990

2 Bedroom, 2.00 Bathroom, 1,220 sqft

Condo / Townhouse on 0.00 Acres

Downtown (Edmonton), Edmonton, AB

It's all about the view, it is an absolutely breathtaking and beautiful view of the river valley. The balcony offers clear views of the Muttart, Telus Field and beyond. Now for this charming home; over 1200 sq.ft. of modern décor, great open floor plan with plenty of room to entertain, hardwood floor, gas fireplace, large primary bedroom with 5-piece ensuite, spacious secondary bedroom, additional 3-piece bathroom, in-suite storage and laundry. For your enjoyment a large fitness room with an assortment of machines both cardio and free weights. No need to scrape snow in the winter with a titled, heated underground parking stall. This location offers convenient access to all amenities around the downtown core, River Valley, Parks, Trails, and U of A. We all have been told to not judge a book by it's cover, well here is proof as once you enter you will be delighted. Come for the view, love the space, and enjoy the location!



Built in 2003

Essential Information

MLS® #	E4407911
Price	\$239,990
Bedrooms	2
Bathrooms	2.00
Full Baths	2

Square Footage	1,220
Acres	0.00
Year Built	2003
Type	Condo / Townhouse
Sub-Type	Apartment High Rise
Style	Single Level Apartment
Status	Active

Community Information

Address	804 9707 105 Street
Area	Edmonton
Subdivision	Downtown (Edmonton)
City	Edmonton
County	ALBERTA
Province	AB
Postal Code	T5K 2Y4

Amenities

Amenities	Ceiling 9 ft., Exercise Room, Parking-Visitor, Secured Parking, Security Door
Parking Spaces	1
Parking	Underground

Interior

Interior Features	ensuite bathroom
Appliances	Dishwasher-Built-In, Hood Fan, Refrigerator, Stacked Washer/Dryer, Stove-Electric, Window Coverings
Heating	Baseboard, Hot Water, Natural Gas
Fireplace	Yes
Fireplaces	Corner
# of Stories	13
Stories	1
Has Basement	Yes
Basement	None, No Basement

Exterior

Exterior	Concrete, Brick, Stucco
Exterior Features	Back Lane, Golf Nearby, Playground Nearby, River Valley View, Schools, Shopping Nearby, View City

Roof	Metal
Construction	Concrete, Brick, Stucco
Foundation	Concrete Perimeter

Additional Information

Date Listed	September 25th, 2024
Days on Market	217
Zoning	Zone 12
Condo Fee	\$777



DATA IS DEEMED RELIABLE BUT IS NOT GUARANTEED ACCURATE BY THE REALTORS® ASSOCIATION OF EDMONTON. COPYRIGHT 2025 BY THE REALTORS® ASSOCIATION OF EDMONTON. ALL RIGHTS RESERVED.Trademarks are owned or controlled by the Canadian Real Estate Association (CREA) and identify real estate professionals who are members of CREA (REALTOR®, REALTORS®) and/or the quality of services they provide (MLS®, Multiple Listing Service®)

Listing information last updated on April 30th, 2025 at 7:32pm MDT