

\$159,900 - 313 11425 105 Avenue, Edmonton

MLS® #E4420996

\$159,900

2 Bedroom, 2.00 Bathroom, 842 sqft

Condo / Townhouse on 0.00 Acres

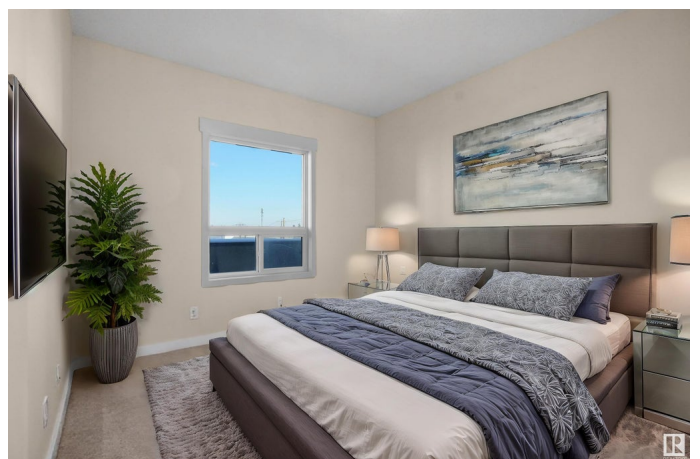
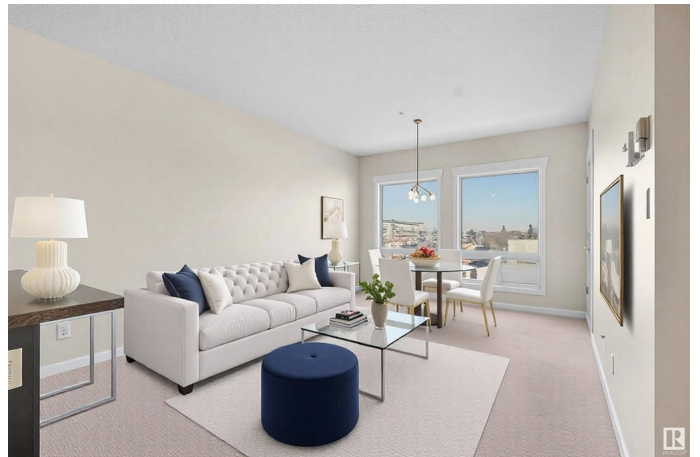
Queen Mary Park, Edmonton, AB

Welcome to The Zen! This fantastic apartment complex is ideally situated just a short walk from downtown's best amenities and Grant MacEwan University, offering the perfect blend of convenience and comfort. Step inside to discover modern vinyl plank flooring throughout, sleek stainless steel appliances, and spacious bedrooms. The open-concept floorplan creates a bright and airy living space, complete with a spacious eat-in kitchen. Enjoy the added perks of in-suite laundry, a private entrance, and a patio. Don't miss your chance to live in one of the most sought-after locations in the city! Immediate possession.

Built in 2010

Essential Information

MLS® #	E4420996
Price	\$159,900
Bedrooms	2
Bathrooms	2.00
Full Baths	2
Square Footage	842
Acres	0.00
Year Built	2010
Type	Condo / Townhouse
Sub-Type	Lowrise Apartment



Style	Single Level Apartment
Status	Active

Community Information

Address	313 11425 105 Avenue
Area	Edmonton
Subdivision	Queen Mary Park
City	Edmonton
County	ALBERTA
Province	AB
Postal Code	T5H 0C5

Amenities

Amenities	Secured Parking, Security Door, See Remarks
Parking Spaces	1
Parking	Heated, Underground

Interior

Interior Features	ensuite bathroom
Appliances	Dishwasher-Built-In, Dryer, Oven-Microwave, Refrigerator, Stove-Electric, Washer
Heating	In Floor Heat System, Natural Gas
# of Stories	6
Stories	1
Has Basement	Yes
Basement	None, No Basement

Exterior

Exterior	Steel, Brick, Stucco
Exterior Features	Playground Nearby, Public Transportation, Schools, Shopping Nearby
Roof	Tar & Gravel
Construction	Steel, Brick, Stucco
Foundation	Concrete Perimeter

Additional Information

Date Listed	February 10th, 2025
Days on Market	139
Zoning	Zone 08
Condo Fee	\$480

DATA IS DEEMED RELIABLE BUT IS NOT GUARANTEED ACCURATE BY THE REALTORS® ASSOCIATION OF EDMONTON. COPYRIGHT 2025 BY THE REALTORS® ASSOCIATION OF EDMONTON. ALL RIGHTS RESERVED.Trademarks are owned or controlled by the Canadian Real Estate Association (CREA) and identify real estate professionals who are members of CREA (REALTOR®, REALTORS®) and/or the quality of services they provide (MLS®, Multiple Listing Service®)

Listing information last updated on June 29th, 2025 at 5:17am MDT