

## \$799,900 - 410 61 Festival Way, Sherwood Park

MLS® #E4422007

**\$799,900**

2 Bedroom, 2.00 Bathroom, 1,138 sqft

Condo / Townhouse on 0.00 Acres

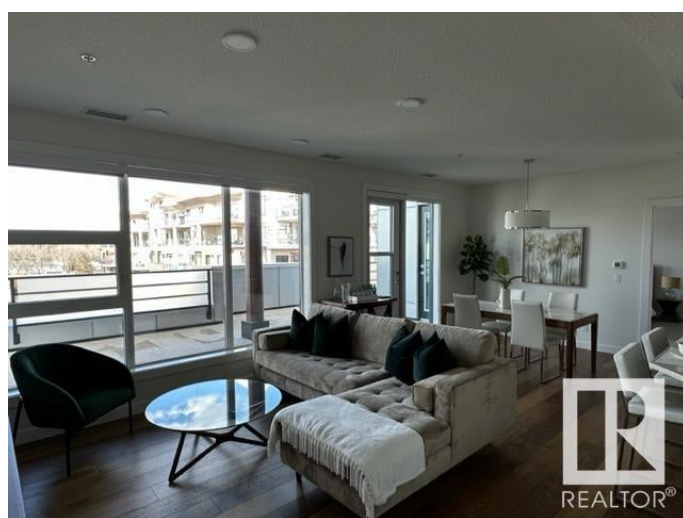
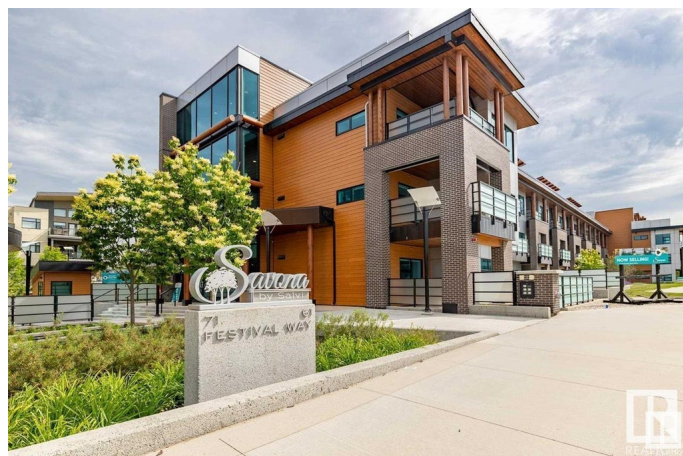
Centre In The Park, Sherwood Park, AB

Top floor executive home with 1200 sq ft in side and 950 sq ft of outdoor living space. Excellent views. Using only the finest materials, and offering beautiful features inside and out, the creature comforts are almost too many to count. Each residence features master-designed and artisan executed custom millwork, exotic hardwoods, and luxurious carpeting. From our unique designer colour palettes to our premium ThyssenKrupp elevators, you will never want to leave your Savona sanctuary. This is Sherwood Park's premiere development in the heart of the Park. Restaurants, theatres, public spaces, lake, and schools all within walking distance. Beautiful third floor unit with spectacular south view. Tons of windows. One bedroom plus den. Gorgeous finishings. Gourmet kitchen with dark cabinetry and quartz counters. Huge shower in ensuite. Roof top BBQ area, Underground stall. AC. Buy lifestyle in the best building in the Park!

Built in 2019

### Essential Information

MLS® #	E4422007
Price	\$799,900
Bedrooms	2
Bathrooms	2.00



Full Baths	2
Square Footage	1,138
Acres	0.00
Year Built	2019
Type	Condo / Townhouse
Sub-Type	Lowrise Apartment
Style	Single Level Apartment
Status	Active

### Community Information

Address	410 61 Festival Way
Area	Sherwood Park
Subdivision	Centre In The Park
City	Sherwood Park
County	ALBERTA
Province	AB
Postal Code	T8A 4Y9

### Amenities

Amenities	Air Conditioner, Barbecue-Built-In, Car Wash, Exercise Room, Parking-Visitor, Party Room
Parking Spaces	1
Parking	Underground

### Interior

Interior Features	ensuite bathroom
Appliances	Air Conditioning-Central, Dishwasher-Built-In, Dryer, Refrigerator, Stove-Electric, Washer, Window Coverings
Heating	Fan Coil, Geo Thermal
# of Stories	4
Stories	4
Has Basement	Yes
Basement	None, No Basement

### Exterior

Exterior	Wood, Composition
Exterior Features	Golf Nearby, Landscaped, Park/Reserve, Picnic Area, Playground Nearby, Public Swimming Pool, Shopping Nearby, View Downtown
Roof	Flat

Construction	Wood, Composition
Foundation	Concrete Perimeter

**Additional Information**

Date Listed	February 19th, 2025
Days on Market	71
Zoning	Zone 25
Condo Fee	\$722

DATA IS DEEMED RELIABLE BUT IS NOT GUARANTEED ACCURATE BY THE REALTORS® ASSOCIATION OF EDMONTON. COPYRIGHT 2025 BY THE REALTORS® ASSOCIATION OF EDMONTON. ALL RIGHTS RESERVED.Trademarks are owned or controlled by the Canadian Real Estate Association (CREA) and identify real estate professionals who are members of CREA (REALTOR®, REALTORS®) and/or the quality of services they provide (MLS®, Multiple Listing Service®)

Listing information last updated on April 30th, 2025 at 11:17pm MDT