

## **\$229,000 - 10480 28a Avenue, Edmonton**

---

MLS® #E4425198

**\$229,000**

3 Bedroom, 1.50 Bathroom, 1,044 sqft

Condo / Townhouse on 0.00 Acres

Ermineskin, Edmonton, AB

Fantastic townhouse in a well-managed complex! Nice layout with a front entrance that flows into a good-size dining room and kitchen. Down the hallway is a beautiful, bright living room featuring a wood-burning, corner fireplace and patio doors that open onto a large, fenced yard. A 2-piece bathroom completes the main level. Upstairs is a spacious primary bedroom with His & Hers closet, two more generous sized bedrooms, and a 4-piece bathroom. The partly finished basement offers a den and space for developing an additional room. Big windows throughout that let in a ton of natural light! A number of updates, including flooring, bathrooms, paint, appliances, and more. An assigned stall conveniently located right in front of the unit, and lots of visitor and street parking available. The quiet complex backs onto residential homes and has undergone many improvements in the last ten years. Excellent location close to the LRT, shops and schools! This is a gem that must be seen!

Built in 1978

### **Essential Information**

MLS® #                      E4425198

Price                        \$229,000

Bedrooms                3



Bathrooms	1.50
Full Baths	1
Half Baths	1
Square Footage	1,044
Acres	0.00
Year Built	1978
Type	Condo / Townhouse
Sub-Type	Townhouse
Style	2 Storey
Status	Active

### Community Information

Address	10480 28a Avenue
Area	Edmonton
Subdivision	Ermineskin
City	Edmonton
County	ALBERTA
Province	AB
Postal Code	T6J 4J6

### Amenities

Amenities	Off Street Parking, On Street Parking, Deck, Parking-Visitor
Parking	Stall

### Interior

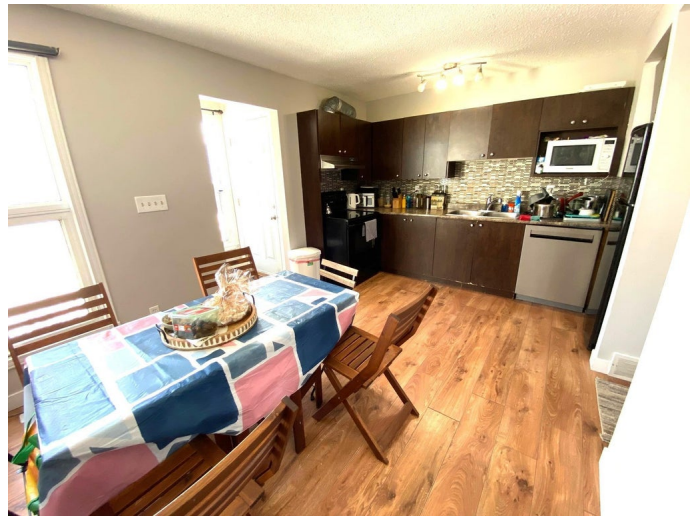
Appliances	Dishwasher-Built-In, Dryer, Hood Fan, Refrigerator, Stove-Electric, Washer
Heating	Forced Air-1, Natural Gas
Stories	2
Has Basement	Yes
Basement	Full, Partially Finished

### Exterior

Exterior	Wood, Stucco
Exterior Features	Fenced, No Back Lane, Playground Nearby, Public Transportation, Schools, Shopping Nearby
Roof	Asphalt Shingles
Construction	Wood, Stucco
Foundation	Concrete Perimeter

## Additional Information

Date Listed	March 12th, 2025
Days on Market	51
Zoning	Zone 16
Condo Fee	\$426



DATA IS DEEMED RELIABLE BUT IS NOT GUARANTEED ACCURATE BY THE REALTORS® ASSOCIATION OF EDMONTON. COPYRIGHT 2025 BY THE REALTORS® ASSOCIATION OF EDMONTON. ALL RIGHTS RESERVED. Trademarks are owned or controlled by the Canadian Real Estate Association (CREA) and identify real estate professionals who are members of CREA (REALTOR®, REALTORS®) and/or the quality of services they provide (MLS®, Multiple Listing Service®)

Listing information last updated on May 2nd, 2025 at 1:32pm MDT