

\$430,000 - 105 Brickyard Drive, Stony Plain

MLS® #E4428456

\$430,000

3 Bedroom, 2.50 Bathroom, 1,435 sqft

Single Family on 0.00 Acres

Brickyard, Stony Plain, AB

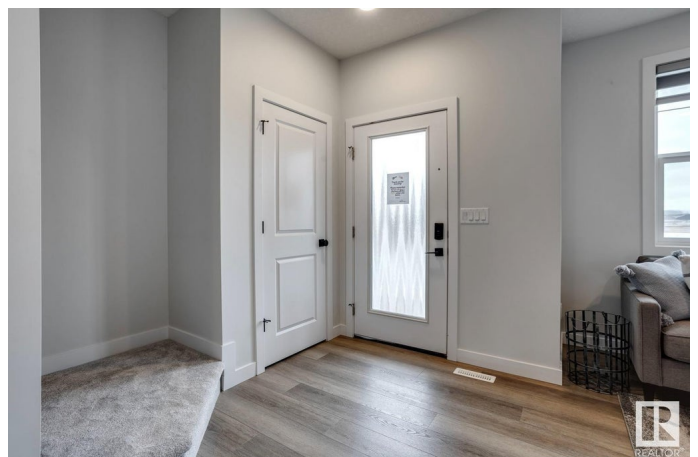
Welcome to this stunning new build two-storey home in the highly sought-after and upcoming Brickyard community. The main level boasts a bright, spacious, open-concept design, perfect for modern living and entertaining. The living room features a cozy electric fireplace, creating a warm and inviting atmosphere. The well-appointed kitchen has sleek stainless steel appliances, a breakfast bar for casual dining, and plenty of storage space. A mudroom, complete with a bench and cubbies to keep your space organized, is conveniently located at the back entrance. A 2pc bath is also on the main level for added convenience. Upstairs, you'll find a thoughtfully designed layout with 3 spacious bedrooms, laundry and a 4pc bath. The primary bedroom includes a 4-piece ensuite and walk-in closet. This home is the perfect blend of functionality and style, set in a vibrant, growing community. Don't miss your chance to make it yours!

Photos are representative

Built in 2025

Essential Information

MLS® #	E4428456
Price	\$430,000
Bedrooms	3
Bathrooms	2.50



Full Baths	2
Half Baths	1
Square Footage	1,435
Acres	0.00
Year Built	2025
Type	Single Family
Sub-Type	Detached Single Family
Style	2 Storey
Status	Active

Community Information

Address	105 Brickyard Drive
Area	Stony Plain
Subdivision	Brickyard
City	Stony Plain
County	ALBERTA
Province	AB
Postal Code	T7Z 1C3

Amenities

Amenities	Ceiling 9 ft., No Animal Home, No Smoking Home
Parking	No Garage

Interior

Interior Features	ensuite bathroom
Appliances	Dishwasher-Built-In, Microwave Hood Fan, Refrigerator, Stove-Electric
Heating	Forced Air-1, Natural Gas
Fireplace	Yes
Fireplaces	Insert
Stories	2
Has Basement	Yes
Basement	Full, Unfinished

Exterior

Exterior	Wood, Vinyl
Exterior Features	Back Lane, Park/Reserve, Playground Nearby, Schools, Shopping Nearby
Roof	Asphalt Shingles
Construction	Wood, Vinyl

Foundation Concrete Perimeter

Additional Information

Date Listed April 1st, 2025

Days on Market 31

Zoning Zone 91

DATA IS DEEMED RELIABLE BUT IS NOT GUARANTEED ACCURATE BY THE REALTORS® ASSOCIATION OF EDMONTON. COPYRIGHT 2025 BY THE REALTORS® ASSOCIATION OF EDMONTON. ALL RIGHTS RESERVED.Trademarks are owned or controlled by the Canadian Real Estate Association (CREA) and identify real estate professionals who are members of CREA (REALTOR®, REALTORS®) and/or the quality of services they provide (MLS®, Multiple Listing Service®)

Listing information last updated on May 2nd, 2025 at 12:17pm MDT