

Courtesy Of Jeff D Jackson Of Bode

\$589,900 - 9520 228 Street, Edmonton

MLS® #E4428470

\$589,900

3 Bedroom, 2.50 Bathroom, 2,195 sqft
Single Family on 0.00 Acres

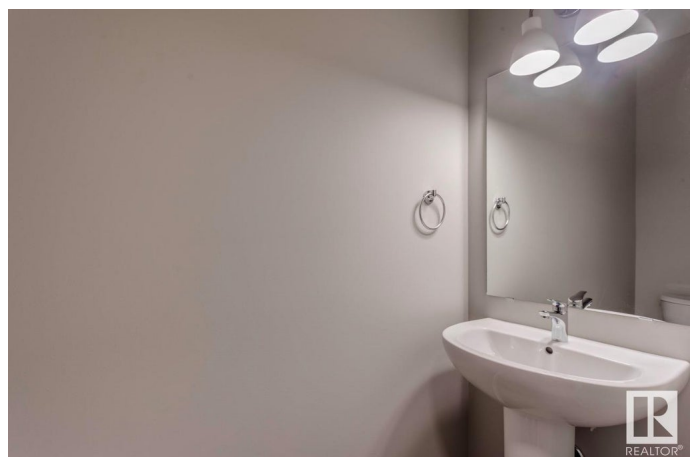
Secord, Edmonton, AB

The Tilsa by Hopewell Residential is a stunning home designed for both style and functionality, featuring a west-facing backyard that welcomes natural light throughout the day. Inside, the spindle railing on the main floor enhances the open-concept design, leading to an upgraded kitchen with quartz countertops, white cabinetry, a chimney hood fan, built-in microwave, extra drawers, and pot lights for a sleek, modern look. The stainless steel appliances complete the space, making it both beautiful and practical. A separate side entrance and 9' foundation height provide added flexibility, while the exterior gas line is ready for future BBQs. The luxurious ensuite shower is tiled to the ceiling, creating a spa-like retreat. Thoughtfully selected flooring includes Luxury Vinyl Plank throughout the main level, luxury vinyl tile in full bathrooms and the laundry room, and plush carpet on the stairs and upper level.

Built in 2025

Essential Information

MLS® #	E4428470
Price	\$589,900
Bedrooms	3
Bathrooms	2.50
Full Baths	2



Half Baths	1
Square Footage	2,195
Acres	0.00
Year Built	2025
Type	Single Family
Sub-Type	Detached Single Family
Style	2 Storey
Status	Active

Community Information

Address	9520 228 Street
Area	Edmonton
Subdivision	Secord
City	Edmonton
County	ALBERTA
Province	AB
Postal Code	T5T 7H5

Amenities

Amenities	Ceiling 9 ft., No Animal Home, No Smoking Home
Parking Spaces	4
Parking	Double Garage Attached

Interior

Interior Features	ensuite bathroom
Appliances	Dishwasher-Built-In, Hood Fan, Oven-Microwave, Refrigerator, Stove-Electric
Heating	Forced Air-2, Natural Gas
Stories	3
Has Basement	Yes
Basement	Full, Unfinished

Exterior

Exterior	Wood, Brick, Vinyl
Exterior Features	Park/Reserve, Playground Nearby, Schools, Shopping Nearby
Roof	Asphalt Shingles
Construction	Wood, Brick, Vinyl
Foundation	Concrete Perimeter

Additional Information

Date Listed April 1st, 2025

Days on Market 76

Zoning Zone 58

DATA IS DEEMED RELIABLE BUT IS NOT GUARANTEED ACCURATE BY THE REALTORS® ASSOCIATION OF EDMONTON. COPYRIGHT 2025 BY THE REALTORS® ASSOCIATION OF EDMONTON. ALL RIGHTS RESERVED. Trademarks are owned or controlled by the Canadian Real Estate Association (CREA) and identify real estate professionals who are members of CREA (REALTOR®, REALTORS®) and/or the quality of services they provide (MLS®, Multiple Listing Service®)

Listing information last updated on June 16th, 2025 at 7:17am MDT