

\$389,900 - 15 150 Everitt Dr, St. Albert

MLS® #E4428827

\$389,900

3 Bedroom, 2.50 Bathroom, 1,419 sqft
Condo / Townhouse on 0.00 Acres

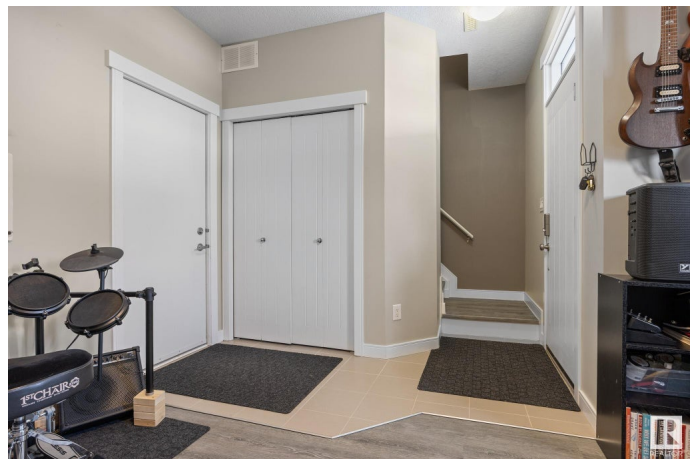
Erin Ridge North, St. Albert, AB

Looking for a great VALUE property in St. Albert that is MOVE IN READY & close to ALL the AMENITIES you could ask for, including central AC?! Welcome to this beautiful & BRIGHT 3 bedroom + den, 2.5 bathroom townhouse in the heart of Erin Ridge! With 1,418 sqft of living space, this home is the perfect for families looking to be close to it all. The open-concept main floor features a stylish kitchen, including eat-up island, spacious living area, dining space, & 2 patios! Upstairs you'll find 3 bedrooms, including the primary suite with your own private 4pc ensuite (no sharing with the kids)! Stay comfortable year-round with central AC & enjoy having your own double attached garage. This home is mere STEPS from highly rated Lois Hole School, walking trails (woods just behind complex), parks, & just minutes from shopping, groceries, Costco, Starbucks & more! With quick access to everything you need, this is an amazing opportunity to own an affordable family home in a PRIME LOCATION. WELCOME HOME!!!

Built in 2014

Essential Information

MLS® #	E4428827
Price	\$389,900



Bedrooms	3
Bathrooms	2.50
Full Baths	2
Half Baths	1
Square Footage	1,419
Acres	0.00
Year Built	2014
Type	Condo / Townhouse
Sub-Type	Townhouse
Style	3 Storey
Status	Active

Community Information

Address	15 150 Everitt Dr
Area	St. Albert
Subdivision	Erin Ridge North
City	St. Albert
County	ALBERTA
Province	AB
Postal Code	T8N 7R8

Amenities

Amenities	Air Conditioner, Ceiling 9 ft., Deck, Parking-Visitor, Vinyl Windows
Parking	Double Garage Attached, Insulated

Interior

Interior Features	ensuite bathroom
Appliances	Air Conditioning-Central, Dishwasher-Built-In, Dryer, Microwave Hood Fan, Refrigerator, Stove-Electric, Washer, Window Coverings
Heating	Forced Air-1, Natural Gas
Stories	3
Has Basement	Yes
Basement	None, No Basement

Exterior

Exterior	Wood, Stone, Vinyl
Exterior Features	Fenced, Low Maintenance Landscape, Playground Nearby, Public Transportation, Schools, Shopping Nearby
Roof	Asphalt Shingles

Construction	Wood, Stone, Vinyl
Foundation	Concrete Perimeter

Additional Information

Date Listed	April 3rd, 2025
Days on Market	27
Zoning	Zone 24
Condo Fee	\$262

DATA IS DEEMED RELIABLE BUT IS NOT GUARANTEED ACCURATE BY THE REALTORS® ASSOCIATION OF EDMONTON. COPYRIGHT 2025 BY THE REALTORS® ASSOCIATION OF EDMONTON. ALL RIGHTS RESERVED.Trademarks are owned or controlled by the Canadian Real Estate Association (CREA) and identify real estate professionals who are members of CREA (REALTOR®, REALTORS®) and/or the quality of services they provide (MLS®, Multiple Listing Service®)

Listing information last updated on April 30th, 2025 at 3:02pm MDT