

\$279,900 - 19 10909 106 Street, Edmonton

MLS® #E4431685

\$279,900

2 Bedroom, 2.50 Bathroom, 908 sqft

Condo / Townhouse on 0.00 Acres

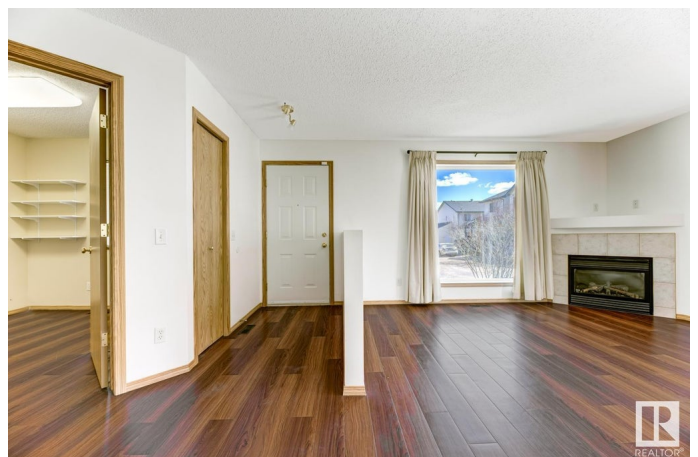
Central Mcdougall, Edmonton, AB

Fantastic low maintenance condo, bungalow style, located in a convenient location, close to Vic Comp/Grant McEwan , playgrounds, Kingsway Mall, and LRT/transportation. Beautifully maintained, 2nd owner home, oak kitchen with island, upgraded stainless appliances (fridge and stove). Sunny ,East and south exposure, open and bright floor plan. 2 generous bedrooms on main floor. 2 piece en-suite off primary bedroom, and a 3 piece main bath. Lower level is fully finished with newer carpet , laundry area and spacious rec/family room, with potential for an additional bedroom. New furnace and hot water on demand (2019) Storage area, and a bonus 4 piece bath. Single attached insulated garage and front drive parking. No yard work! Enjoy the east verandah for your morning coffee. Fantastic empty nester, downsizing or starter home !

Built in 2003

Essential Information

MLS® #	E4431685
Price	\$279,900
Bedrooms	2
Bathrooms	2.50
Full Baths	2
Half Baths	1



Square Footage	908
Acres	0.00
Year Built	2003
Type	Condo / Townhouse
Sub-Type	Townhouse
Style	Bungalow
Status	Active

Community Information

Address	19 10909 106 Street
Area	Edmonton
Subdivision	Central Mcdougall
City	Edmonton
County	ALBERTA
Province	AB
Postal Code	T5H 4M7

Amenities

Amenities	Hot Water Instant, Hot Water Tankless, Vinyl Windows
Parking Spaces	2
Parking	Single Garage Attached

Interior

Interior Features	ensuite bathroom
Appliances	Dishwasher-Built-In, Dryer, Garage Control, Garage Opener, Microwave Hood Fan, Refrigerator, Stove-Electric, Washer, Window Coverings
Heating	Forced Air-1, Natural Gas
Fireplace	Yes
Fireplaces	Glass Door
Stories	2
Has Basement	Yes
Basement	Full, Finished

Exterior

Exterior	Wood, Vinyl
Exterior Features	Corner Lot, Playground Nearby, Public Transportation, Schools, Shopping Nearby
Roof	Asphalt Shingles
Construction	Wood, Vinyl

Foundation Concrete Perimeter

Additional Information

Date Listed April 17th, 2025
Days on Market 60
Zoning Zone 08
Condo Fee \$400

DATA IS DEEMED RELIABLE BUT IS NOT GUARANTEED ACCURATE BY THE REALTORS® ASSOCIATION OF EDMONTON. COPYRIGHT 2025 BY THE REALTORS® ASSOCIATION OF EDMONTON. ALL RIGHTS RESERVED.Trademarks are owned or controlled by the Canadian Real Estate Association (CREA) and identify real estate professionals who are members of CREA (REALTOR®, REALTORS®) and/or the quality of services they provide (MLS®, Multiple Listing Service®)
Listing information last updated on June 16th, 2025 at 1:02pm MDT