

## \$239,900 - 214 10033 110 Street, Edmonton

MLS® #E4434527

**\$239,900**

2 Bedroom, 1.00 Bathroom, 874 sqft

Condo / Townhouse on 0.00 Acres

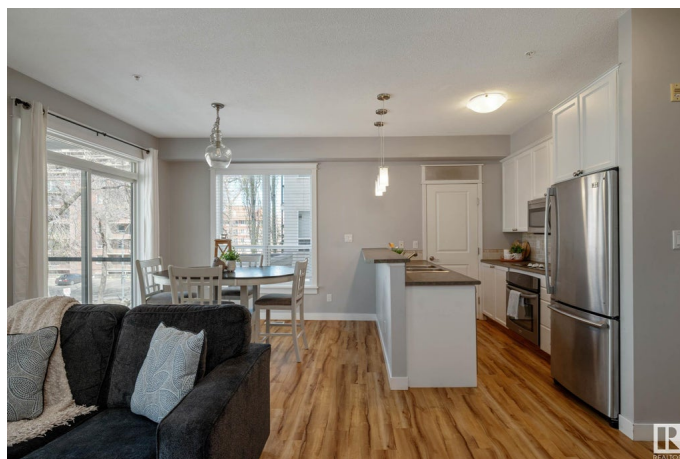
W&hkw&ant&win, Edmonton, AB

This bright and beautiful END UNIT condo has a great open concept layout with an updated kitchen, dining area with plenty of room for a full table, and a large living room complete with a cozy electric fireplace. Both bedrooms have ample closets, and the 2nd bedroom is complete with built in cabinetry and shelving. The large bathroom features a rainfall, fully tiled shower and plenty of storage space. Enjoy warm evenings on the large west facing balcony overlooking the mature tree lined street! Features include: IN SUITE LAUNDRY, TITLED UNDERGROUND PARKING, gas line for a BBQ, A/C, and updated fixtures. AMAZING WALKABILITY AND LOCATION- only steps to numerous amenities, Grant Macewan, the river valley trail system and bus stops/LRT stations.

Built in 1999

### Essential Information

MLS® #	E4434527
Price	\$239,900
Bedrooms	2
Bathrooms	1.00
Full Baths	1
Square Footage	874
Acres	0.00
Year Built	1999



Type	Condo / Townhouse
Sub-Type	Lowrise Apartment
Style	Single Level Apartment
Status	Active

### Community Information

Address	214 10033 110 Street
Area	Edmonton
Subdivision	W&hkw&nt&win
City	Edmonton
County	ALBERTA
Province	AB
Postal Code	T5K 1J5

### Amenities

Amenities	Deck, No Animal Home, No Smoking Home, Parking-Visitor, Secured Parking, Security Door, Sprinkler System-Fire, Natural Gas BBQ Hookup
Parking	Underground

### Interior

Appliances	Dishwasher-Built-In, Dryer, Microwave Hood Fan, Refrigerator, Stove-Electric, Washer, Window Coverings
Heating	Forced Air-1, Natural Gas
# of Stories	4
Stories	1
Has Basement	Yes
Basement	None, No Basement

### Exterior

Exterior	Wood, Stucco
Exterior Features	Golf Nearby, Landscaped, Park/Reserve, Public Transportation, Schools, Shopping Nearby, View City
Roof	Tar & Gravel
Construction	Wood, Stucco
Foundation	Concrete Perimeter

### School Information

Elementary	Wihkwentowin School
Middle	Westminster School
High	Victoria School

**Additional Information**

Date Listed	May 5th, 2025
Days on Market	16
Zoning	Zone 12
Condo Fee	\$468

DATA IS DEEMED RELIABLE BUT IS NOT GUARANTEED ACCURATE BY THE REALTORS® ASSOCIATION OF EDMONTON. COPYRIGHT 2025 BY THE REALTORS® ASSOCIATION OF EDMONTON. ALL RIGHTS RESERVED.Trademarks are owned or controlled by the Canadian Real Estate Association (CREA) and identify real estate professionals who are members of CREA (REALTOR®, REALTORS®) and/or the quality of services they provide (MLS®, Multiple Listing Service®)

Listing information last updated on May 21st, 2025 at 8:47am MDT