

\$299,000 - 609 10235 112 Street, Edmonton

MLS® #E4435385

\$299,000

2 Bedroom, 2.00 Bathroom, 773 sqft

Condo / Townhouse on 0.00 Acres

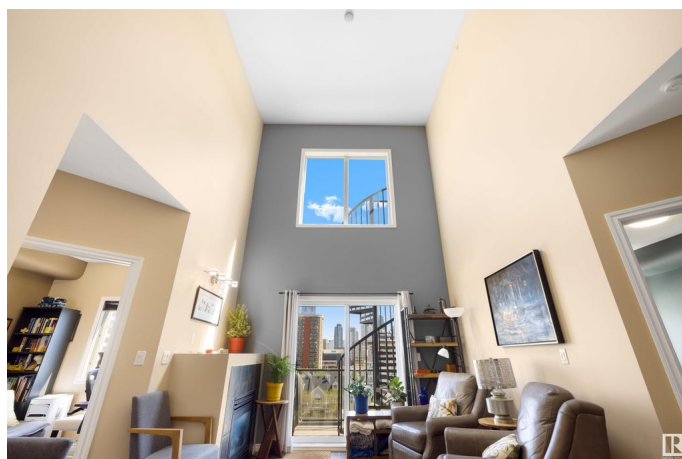
Wähkwäntäwin, Edmonton, AB

Welcome to The Imperial! Sure to impress, this top floor PENTHOUSE condo includes a private ROOFTOP PATIO with spiral staircase and stunning downtown views. This spacious 2 bed / 2 bath condo features engineered hardwood floors, an open and updated kitchen with stainless steel appliances and granite countertops, and high end finishes throughout. Enjoy relaxing next to the gas fireplace in your loft-style living room, with its soaring 16' vaulted ceiling above. The large primary suite features an ensuite and double walkthrough closet with custom organizers. Convenience is key with in-suite laundry, an underground titled parking stall, and your own private storage cabinet. Prime location within walking distance to Downtown, MacEwan University, restaurants, walking trails, the LRT, and the River Valley. A must see!

Built in 2007

Essential Information

MLS® #	E4435385
Price	\$299,000
Bedrooms	2
Bathrooms	2.00
Full Baths	2
Square Footage	773
Acres	0.00



Year Built	2007
Type	Condo / Townhouse
Sub-Type	Lowrise Apartment
Style	Single Level Apartment
Status	Active

Community Information

Address	609 10235 112 Street
Area	Edmonton
Subdivision	WÃ©hkwÃ©ntÃ©win
City	Edmonton
County	ALBERTA
Province	AB
Postal Code	T5K 1M7

Amenities

Amenities	On Street Parking, Ceiling 9 ft., No Animal Home, No Smoking Home, Patio, Secured Parking, Storage-In-Suite, Vaulted Ceiling, Storage Cage, Rooftop Deck/Patio
Parking Spaces	1
Parking	Heated, Stall, Underground

Interior

Interior Features	ensuite bathroom
Appliances	Dishwasher-Built-In, Dryer, Microwave Hood Fan, Refrigerator, Stove-Electric, Washer, Window Coverings, See Remarks
Heating	In Floor Heat System, Natural Gas
Fireplace	Yes
Fireplaces	Tile Surround
# of Stories	6
Stories	1
Has Basement	Yes
Basement	None, No Basement

Exterior

Exterior	Concrete, Stucco
Exterior Features	Golf Nearby, Playground Nearby, Public Transportation, Schools, Shopping Nearby, View City, View Downtown
Roof	Tar & Gravel

Construction	Concrete, Stucco
Foundation	Concrete Perimeter

School Information

Elementary	St.Catherine,Grandin
Middle	St.Catherine,Spruce Avenue
High	Victoria School of Arts

Additional Information

Date Listed	May 8th, 2025
Days on Market	39
Zoning	Zone 12
Condo Fee	\$644

DATA IS DEEMED RELIABLE BUT IS NOT GUARANTEED ACCURATE BY THE REALTORS® ASSOCIATION OF EDMONTON. COPYRIGHT 2025 BY THE REALTORS® ASSOCIATION OF EDMONTON. ALL RIGHTS RESERVED.Trademarks are owned or controlled by the Canadian Real Estate Association (CREA) and identify real estate professionals who are members of CREA (REALTOR®, REALTORS®) and/or the quality of services they provide (MLS®, Multiple Listing Service®)

Listing information last updated on June 16th, 2025 at 12:32pm MDT