

## \$549,900 - 35 Eldorado Drive, St. Albert

MLS® #E4435548

**\$549,900**

3 Bedroom, 2.50 Bathroom, 1,232 sqft

Single Family on 0.00 Acres

Erin Ridge, St. Albert, AB

This stunning home is nestled in a peaceful, park-like environment, offering privacy with mature trees and expansive green space in the backyard. Its prime location is perfect for those who enjoy the outdoors, with walking trails and a nearby park for recreation. The main floor spans 1220 sq ft of bright, open living space, featuring vaulted ceilings in the entrance, living/dining rooms, and kitchen. Oak hardwood floors and ceramic tile flow throughout the home, and the kitchen boasts granite countertops with undermount sinks. A cozy gas fireplace with stone facing enhances the living room. The spacious master bedroom offers dual closets and a 4-piece ensuite. The fully developed lower level includes a large family room with a gas fireplace, two bedrooms, a bonus room, and a 4-piece bathroom with granite finishes. The pristine basement has a large furnace/storage room for extra space. The double front-drive garage is insulated and dry-walled for added convenience. This home truly has it all!

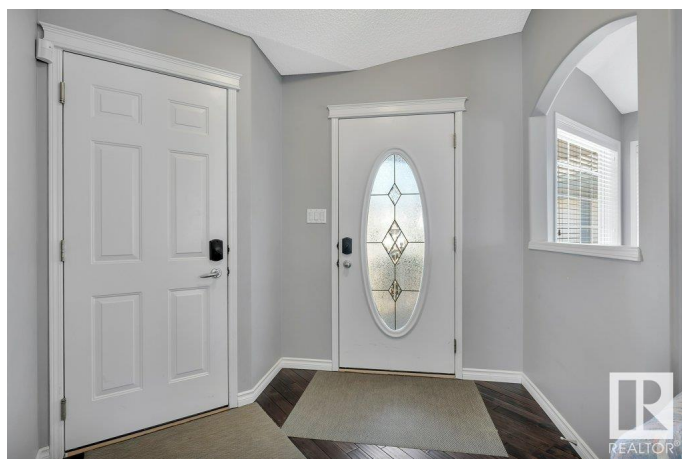
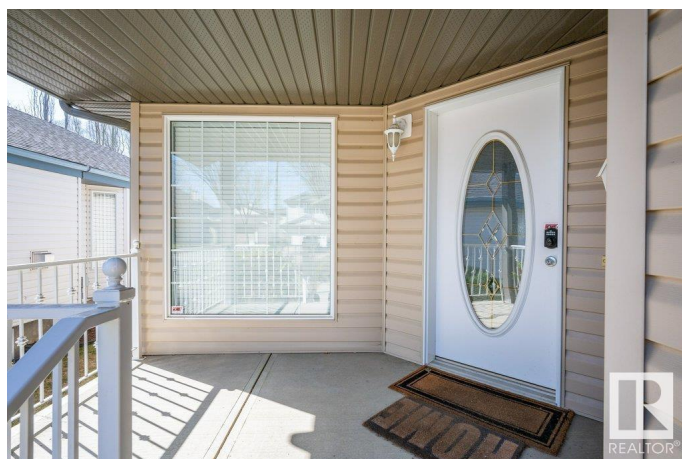
Built in 2004

### Essential Information

MLS® # E4435548

Price \$549,900

Bedrooms 3



Bathrooms	2.50
Full Baths	2
Half Baths	1
Square Footage	1,232
Acres	0.00
Year Built	2004
Type	Single Family
Sub-Type	Detached Single Family
Style	Bungalow
Status	Active

### Community Information

Address	35 Eldorado Drive
Area	St. Albert
Subdivision	Erin Ridge
City	St. Albert
County	ALBERTA
Province	AB
Postal Code	T8N 7G4

### Amenities

Amenities	Deck, Vaulted Ceiling
Parking	Double Garage Attached, Insulated

### Interior

Interior Features	ensuite bathroom
Appliances	Dishwasher-Built-In, Dryer, Humidifier-Power(Furnace), Microwave Hood Fan, Refrigerator, Stove-Electric, Vacuum System Attachments, Vacuum Systems, Washer, Window Coverings
Heating	Forced Air-1, Natural Gas
Fireplace	Yes
Fireplaces	Stone Facing
Stories	2
Has Basement	Yes
Basement	Full, Finished

### Exterior

Exterior	Wood, Brick, Vinyl
Exterior Features	Fenced, Landscaped, Park/Reserve, Playground Nearby, Schools,

	Shopping Nearby
Roof	Asphalt Shingles
Construction	Wood, Brick, Vinyl
Foundation	Concrete Perimeter

### **Additional Information**

Date Listed	May 9th, 2025
Days on Market	3
Zoning	Zone 24

DATA IS DEEMED RELIABLE BUT IS NOT GUARANTEED ACCURATE BY THE REALTORS® ASSOCIATION OF EDMONTON. COPYRIGHT 2025 BY THE REALTORS® ASSOCIATION OF EDMONTON. ALL RIGHTS RESERVED. Trademarks are owned or controlled by the Canadian Real Estate Association (CREA) and identify real estate professionals who are members of CREA (REALTOR®, REALTORS®) and/or the quality of services they provide (MLS®, Multiple Listing Service®)

Listing information last updated on May 12th, 2025 at 11:32am MDT