

\$450,000 - 17 Eton Link, Spruce Grove

MLS® #E4435982

\$450,000

3 Bedroom, 2.50 Bathroom, 1,434 sqft
Single Family on 0.00 Acres

Easton, Spruce Grove, AB

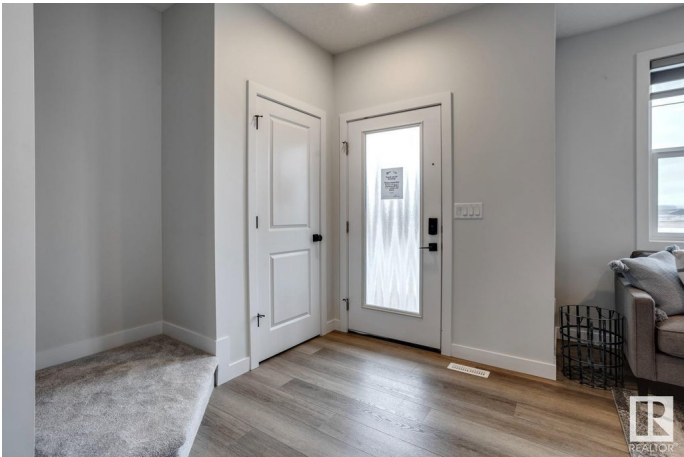
Welcome to this thoughtfully designed 2-storey home, where the builder’s attention to detail is evident in every feature. Perfectly located for a quick and easy commute to the city, this home offers a south-facing backyard that fills the space with natural light. The main floor boasts a bright, open-concept layout with an inviting electric fireplace, a spacious dining area, and a stylish kitchen complete with a pantry, island, and breakfast bar. A mudroom, 2pc powder room, and side entrance add convenience and future potential. Upstairs, the primary suite offers a walk-in closet and 4-piece ensuite, while two additional bedrooms share a full bath. The upper-level laundry makes everyday living easier. This home is the perfect blend of comfort, style, and location—ready for your next chapter.

Photos are representative

Built in 2025

Essential Information

MLS® #	E4435982
Price	\$450,000
Bedrooms	3
Bathrooms	2.50
Full Baths	2
Half Baths	1
Square Footage	1,434



Acres	0.00
Year Built	2025
Type	Single Family
Sub-Type	Detached Single Family
Style	2 Storey
Status	Active

Community Information

Address	17 Eton Link
Area	Spruce Grove
Subdivision	Easton
City	Spruce Grove
County	ALBERTA
Province	AB
Postal Code	T7X 4B7

Amenities

Amenities	No Animal Home, No Smoking Home, Vinyl Windows
Parking	Parking Pad Cement/Paved

Interior

Interior Features	ensuite bathroom
Appliances	Dishwasher-Built-In, Microwave Hood Fan, Refrigerator, Stove-Electric
Heating	Forced Air-1, Natural Gas
Fireplace	Yes
Fireplaces	Insert
Stories	2
Has Basement	Yes
Basement	Full, Unfinished

Exterior

Exterior	Wood, Vinyl
Exterior Features	Park/Reserve, Playground Nearby, Schools, Shopping Nearby
Roof	Asphalt Shingles
Construction	Wood, Vinyl
Foundation	Concrete Perimeter

Additional Information

Date Listed	May 12th, 2025
-------------	----------------

Days on Market 21

Zoning Zone 91

DATA IS DEEMED RELIABLE BUT IS NOT GUARANTEED ACCURATE BY THE REALTORS® ASSOCIATION OF EDMONTON. COPYRIGHT 2025 BY THE REALTORS® ASSOCIATION OF EDMONTON. ALL RIGHTS RESERVED. Trademarks are owned or controlled by the Canadian Real Estate Association (CREA) and identify real estate professionals who are members of CREA (REALTOR®, REALTORS®) and/or the quality of services they provide (MLS®, Multiple Listing Service®)

Listing information last updated on June 2nd, 2025 at 12:02am MDT