

\$229,900 - 330 11603 Ellerslie Road, Edmonton

MLS® #E4436032

\$229,900

2 Bedroom, 2.00 Bathroom, 862 sqft

Condo / Townhouse on 0.00 Acres

Rutherford (Edmonton), Edmonton, AB

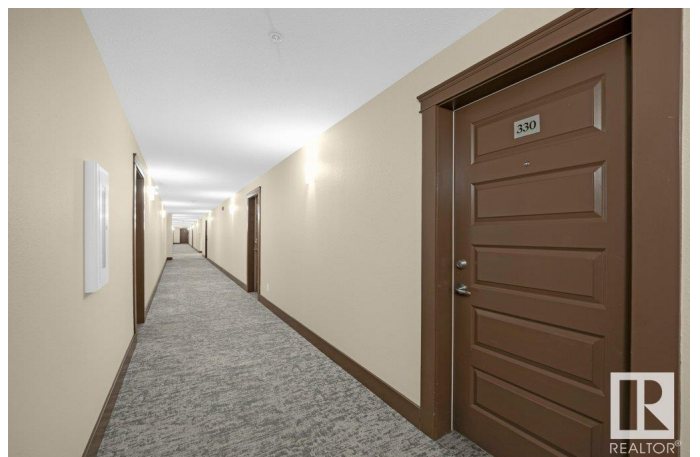
Prime Condo in Elite Location – Secure, Stylish & Spacious! This mint-condition, move-in-ready 2-bedroom, 2-bathroom condo is designed for effortless modern living! The spacious living room extends to a private balcony, equipped with a gas connection for BBQ, creating the perfect space for relaxation or entertaining. The primary bedroom features a walk-in closet, offering plenty of storage and a touch of luxury. Enjoy the ease of an in-unit laundry room, making everyday chores seamless. This meticulously maintained unit also includes a titled underground heated parking spot and secured storage cage for ultimate convenience and security. The condominium offers premium amenities, including a guest suite, recreation room, fully equipped gym, and onsite visitor parking for hassle-free hosting. Located in the vibrant Ellerslie Road area near James Mowatt, this condo is close to schools, parks, shopping, and provides quick access to Anthony Henday & QE2, effortless commuting. Opportunities like this don't last

Built in 2007

Essential Information

MLS® # E4436032

Price \$229,900



Bedrooms	2
Bathrooms	2.00
Full Baths	2
Square Footage	862
Acres	0.00
Year Built	2007
Type	Condo / Townhouse
Sub-Type	Lowrise Apartment
Style	Single Level Apartment
Status	Active

Community Information

Address	330 11603 Ellerslie Road
Area	Edmonton
Subdivision	Rutherford (Edmonton)
City	Edmonton
County	ALBERTA
Province	AB
Postal Code	T6W 0J3

Amenities

Amenities	Carbon Monoxide Detectors, Exercise Room, Guest Suite, No Animal Home, No Smoking Home, Parking-Visitor, Recreation Room/Centre, Secured Parking, Sprinkler System-Fire, Storage Cage, Natural Gas BBQ Hookup
Parking	Underground

Interior

Interior Features	ensuite bathroom
Appliances	Dishwasher-Built-In, Garage Opener, Microwave Hood Fan, Refrigerator, Stacked Washer/Dryer, Stove-Electric, Window Coverings
Heating	Baseboard, Natural Gas
# of Stories	4
Stories	4
Has Basement	Yes
Basement	None, No Basement

Exterior

Exterior	Wood, Stucco, Vinyl
----------	---------------------

Exterior Features	Airport Nearby, Commercial, Golf Nearby, Playground Nearby, Private Setting, Schools, Shopping Nearby, See Remarks
Roof	Asphalt Shingles
Construction	Wood, Stucco, Vinyl
Foundation	Concrete Perimeter

Additional Information

Date Listed	May 12th, 2025
Days on Market	2
Zoning	Zone 55
Condo Fee	\$553

DATA IS DEEMED RELIABLE BUT IS NOT GUARANTEED ACCURATE BY THE REALTORS® ASSOCIATION OF EDMONTON. COPYRIGHT 2025 BY THE REALTORS® ASSOCIATION OF EDMONTON. ALL RIGHTS RESERVED. Trademarks are owned or controlled by the Canadian Real Estate Association (CREA) and identify real estate professionals who are members of CREA (REALTOR®, REALTORS®) and/or the quality of services they provide (MLS®, Multiple Listing Service®)

Listing information last updated on May 14th, 2025 at 7:02pm MDT