

## \$229,900 - 12835 121 Street, Edmonton

MLS® #E4437143

**\$229,900**

2 Bedroom, 1.00 Bathroom, 835 sqft

Single Family on 0.00 Acres

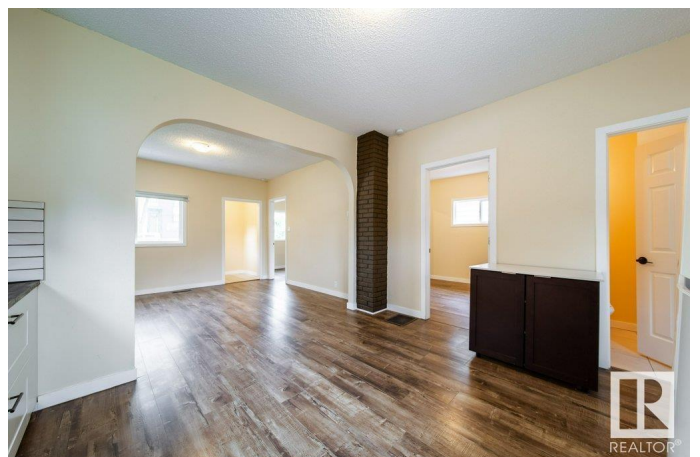
Calder, Edmonton, AB

Absolutely affordable and adorable! Fully renovated Bungalow on 33'x125' with back lane access. Lot Zoned RF2. Beautiful tree lined boulevard, new roads and sidewalks. Home is vintage but very bright and open! Practical floor plan. 2 Bedrooms + Den with laundry (Guest Room) on main floor. Spacious 4 piece Bath. Many Modern Upgrades: Concrete Walkways, Vinyl Windows, Tile and Vinyl Plank Flooring, Interior Doors and Trims, Mirrored Closet and Barn Door, Kitchen, Appliances, Bathroom, Lighting, Main floor Laundry, Fences. Newer Shingles, Furnace and Sump. Basement partly ledge and full, concrete floors and walls, easy access for storage and mechanical. Lots of parking behind fence for cars and RV. Potential for Garage Suite. Close to community halls, neighborhood shopping, schools and the new Dog Park. Seller had it as a rental. Property and appliances are sold as is. Perfect investment or first home!

Built in 1920

### Essential Information

MLS® #	E4437143
Price	\$229,900
Bedrooms	2
Bathrooms	1.00



Full Baths	1
Square Footage	835
Acres	0.00
Year Built	1920
Type	Single Family
Sub-Type	Detached Single Family
Style	Bungalow
Status	Active

### **Community Information**

Address	12835 121 Street
Area	Edmonton
Subdivision	Calder
City	Edmonton
County	ALBERTA
Province	AB
Postal Code	T5L 0B1

### **Amenities**

Amenities	On Street Parking, Ceiling 9 ft., Deck, Low Flw/Dual Flush Toilet, Vinyl Windows
Parking Spaces	3
Parking	Rear Drive Access, RV Parking, See Remarks

### **Interior**

Appliances	Dishwasher-Built-In, Hood Fan, Refrigerator, Stacked Washer/Dryer, Storage Shed, Stove-Electric
Heating	Forced Air-1, Natural Gas
Stories	1
Has Basement	Yes
Basement	See Remarks, Unfinished

### **Exterior**

Exterior	Wood
Exterior Features	Back Lane, Fenced, Landscaped, Playground Nearby, Public Transportation, Schools, Shopping Nearby, See Remarks
Roof	Asphalt Shingles
Construction	Wood
Foundation	See Remarks

**School Information**

Elementary	St.Edmund,Calder
Middle	St.Edmund,Rosslyn
High	O'Leary,Ross Sheppard

**Additional Information**

Date Listed	May 15th, 2025
Days on Market	4
Zoning	Zone 01

DATA IS DEEMED RELIABLE BUT IS NOT GUARANTEED ACCURATE BY THE REALTORS® ASSOCIATION OF EDMONTON. COPYRIGHT 2025 BY THE REALTORS® ASSOCIATION OF EDMONTON. ALL RIGHTS RESERVED.Trademarks are owned or controlled by the Canadian Real Estate Association (CREA) and identify real estate professionals who are members of CREA (REALTOR®, REALTORS®) and/or the quality of services they provide (MLS®, Multiple Listing Service®)

Listing information last updated on May 19th, 2025 at 6:32am MDT