

\$515,000 - 2 Westwyck Link, Spruce Grove

MLS® #E4437246

\$515,000

3 Bedroom, 3.00 Bathroom, 1,890 sqft
Single Family on 0.00 Acres

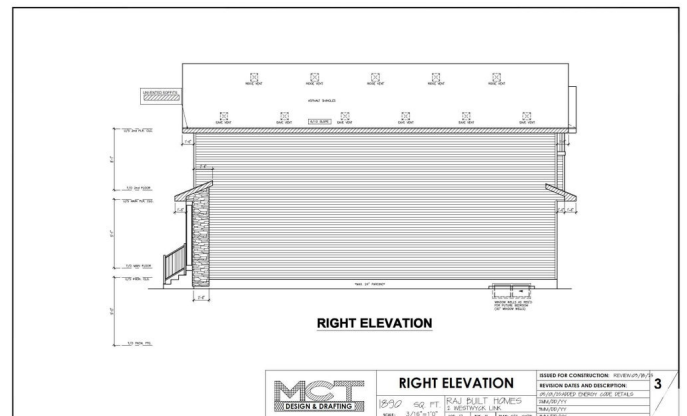
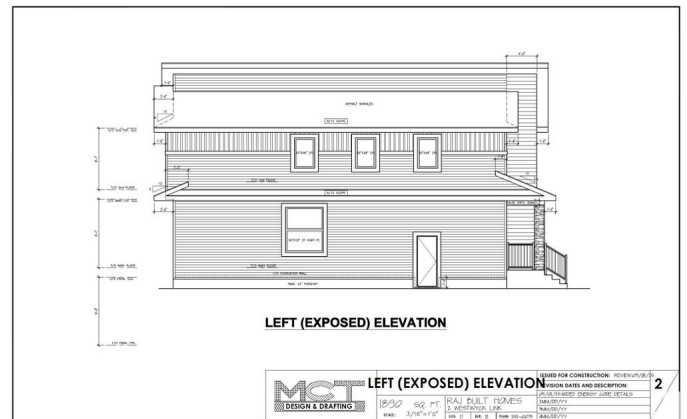
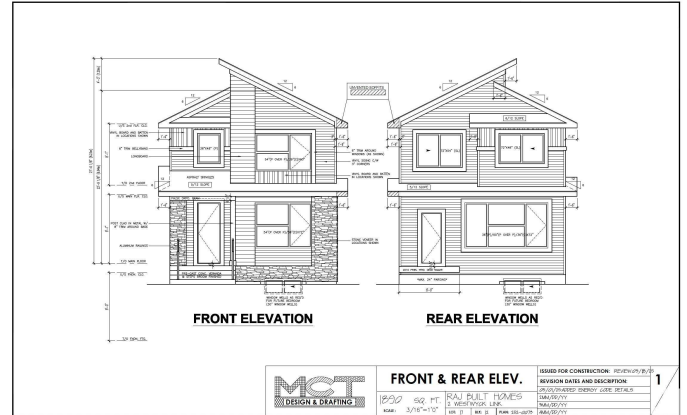
Fenwyck, Spruce Grove, AB

Step into exceptional design and spacious living with this brand new home by Raj Built Homes—a master carpenter known for building numerous high-quality homes in Fenwyck. On a large corner lot, featuring a bright, open-concept layout with oversized windows, luxury vinyl plank flooring, and a stylish kitchen complete with quartz countertops and modern cabinetry. The main floor includes a cozy fireplace and a full bedroom with a 4-piece bath, perfect for guests or extended family. Upstairs offers three generously sized bedrooms, a 4-piece bath, a stunning 5-piece ensuite in the primary suite, a large bonus room, and convenient upstairs laundry. With a separate side entrance, there’s exciting potential for a future basement suite. Double detached garage + deck included. Select finishes can still be customized—add your personal touch and make it your own. This is your opportunity to own a truly spacious, quality-built home in one of Spruce Grove's most desirable communities, 10min to West of Edmonton.

Built in 2025

Essential Information

MLS® # E4437246
Price \$515,000



Bedrooms	3
Bathrooms	3.00
Full Baths	3
Square Footage	1,890
Acres	0.00
Year Built	2025
Type	Single Family
Sub-Type	Detached Single Family
Style	2 Storey
Status	Active

Community Information

Address	2 Westwyck Link
Area	Spruce Grove
Subdivision	Fenwyck
City	Spruce Grove
County	ALBERTA
Province	AB
Postal Code	T7X 3H1

Amenities

Amenities	On Street Parking, Carbon Monoxide Detectors, Ceiling 9 ft., Detectors Smoke, HRV System
Parking	Double Garage Detached

Interior

Interior Features	ensuite bathroom
Appliances	Builder Appliance Credit
Heating	Forced Air-1, Natural Gas
Stories	2
Has Basement	Yes
Basement	Full, Unfinished

Exterior

Exterior	Wood, Vinyl
Exterior Features	Back Lane, Flat Site, Public Transportation, Schools, Shopping Nearby
Roof	Asphalt Shingles
Construction	Wood, Vinyl
Foundation	Concrete Perimeter

Additional Information

Date Listed May 18th, 2025

Days on Market 77

Zoning Zone 91

DATA IS DEEMED RELIABLE BUT IS NOT GUARANTEED ACCURATE BY THE REALTORS® ASSOCIATION OF EDMONTON. COPYRIGHT 2025 BY THE REALTORS® ASSOCIATION OF EDMONTON. ALL RIGHTS RESERVED. Trademarks are owned or controlled by the Canadian Real Estate Association (CREA) and identify real estate professionals who are members of CREA (REALTOR®, REALTORS®) and/or the quality of services they provide (MLS®, Multiple Listing Service®)

Listing information last updated on August 3rd, 2025 at 10:17am MDT