

\$399,000 - 1247 Gillespie Crescent, Edmonton

MLS® #E4438228

\$399,000

3 Bedroom, 2.00 Bathroom, 1,096 sqft

Single Family on 0.00 Acres

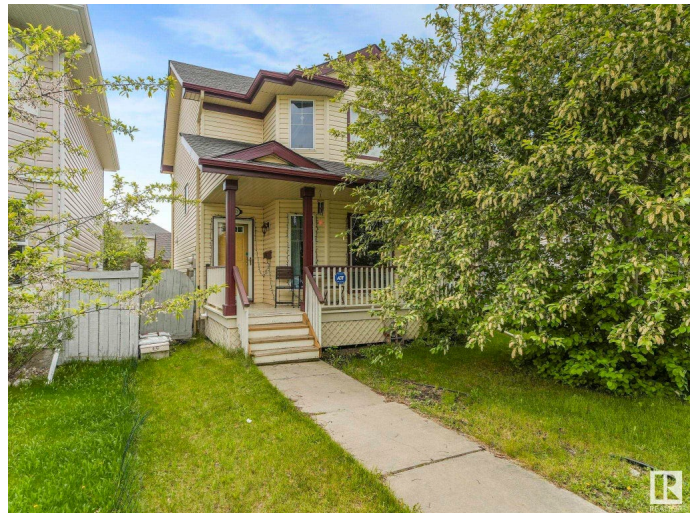
Glastonbury, Edmonton, AB

Don't miss out on this great opportunity !!Fantastic t home located in heart of Glastonbury that offers three upper level three bedrooms with one full bath and two 2 pcs bathrooms plus a fully finished basement .The main living room has a a large picture window overlooking the front porch. the spacious kitchen has plenty of cabinets and a large pantry plus eating area. The primary bedroom has plenty pf room to fit a king size bed and a large walk-in closet. Two more generous rooms ideal for a growing family.The fully finished basement boasts a second family room., A Rec room and a 2 pc bath.The back yard has well large Deck plus a double detached garage .Recent upgrades includes a newer roof, new furnace with A/c Solid Home with good bones in need of a little TLC, paint and flooring.

Built in 2002

Essential Information

MLS® #	E4438228
Price	\$399,000
Bedrooms	3
Bathrooms	2.00
Full Baths	1
Half Baths	2
Square Footage	1,096



Acres	0.00
Year Built	2002
Type	Single Family
Sub-Type	Detached Single Family
Style	2 Storey
Status	Active

Community Information

Address	1247 Gillespie Crescent
Area	Edmonton
Subdivision	Glastonbury
City	Edmonton
County	ALBERTA
Province	AB
Postal Code	T5T 6M6

Amenities

Amenities	Air Conditioner, Deck
Parking	Double Garage Detached

Interior

Appliances	Garage Opener, Refrigerator, Stove-Electric, Dryer-Two, Washers-Two, Microwave Hood Fan-Two
Heating	Forced Air-1, Natural Gas
Stories	2
Has Basement	Yes
Basement	Full, Partially Finished

Exterior

Exterior	Wood, Vinyl
Exterior Features	Landscaped, Park/Reserve, Playground Nearby, Public Transportation
Roof	Asphalt Shingles
Construction	Wood, Vinyl
Foundation	Concrete Perimeter

Additional Information

Date Listed	May 21st, 2025
Days on Market	24
Zoning	Zone 58

DATA IS DEEMED RELIABLE BUT IS NOT GUARANTEED ACCURATE BY THE REALTORS® ASSOCIATION OF EDMONTON. COPYRIGHT 2025 BY THE REALTORS® ASSOCIATION OF EDMONTON. ALL RIGHTS RESERVED. Trademarks are owned or controlled by the Canadian Real Estate Association (CREA) and identify real estate professionals who are members of CREA (REALTOR®, REALTORS®) and/or the quality of services they provide (MLS®, Multiple Listing Service®)

Listing information last updated on June 14th, 2025 at 2:17pm MDT