

\$1,850,000 - 105 161 Ave Nw, Edmonton

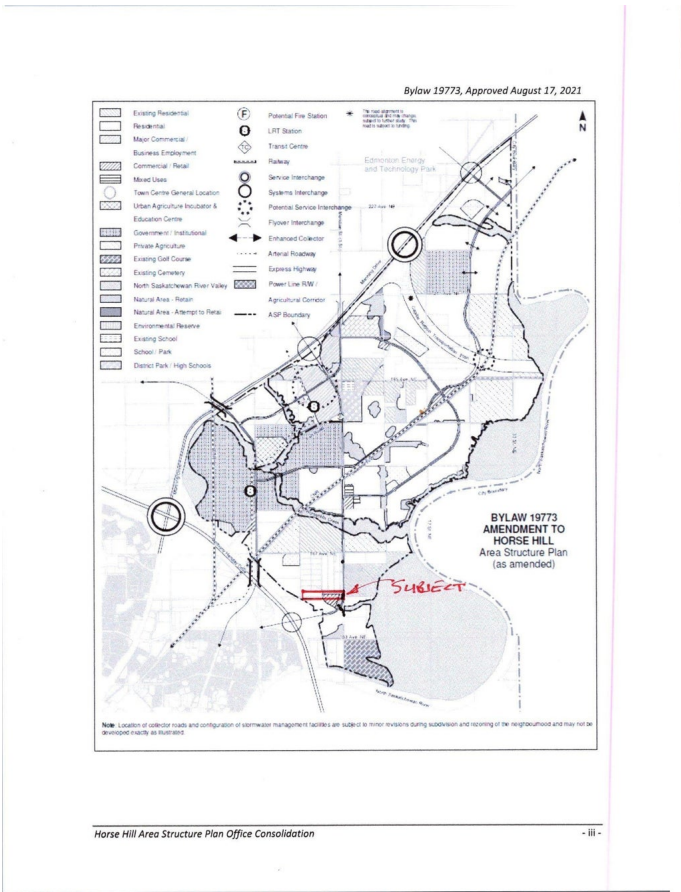
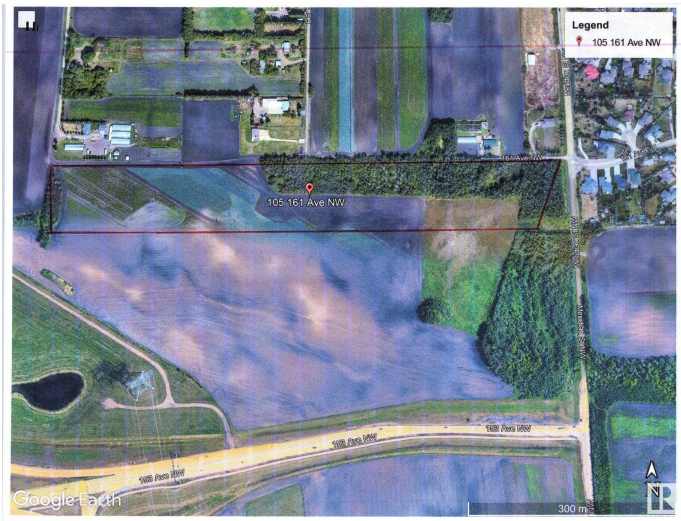
MLS® #E4438534

\$1,850,000

0 Bedroom, 0.00 Bathroom,
Single Family on 0.00 Acres

Rural North East South Sturgeon, Edmonton,
AB

This 19.25 acre parcel is an excellent investment opportunity for future residential development. it is situated within the future Horse Hill Neighbourhood 1B which is part of the Horse Hill Area Structure Plan. Residential development is currently underway across from this parcel. It is located across from the Quarry Ridge residential community and minutes away from both the Quarry Golf Club. Excess to Meridian Street and 153 ave connecting to Anthony Henday Freeway.



Essential Information

MLS® #	E4438534
Price	\$1,850,000
Bathrooms	0.00
Acres	0.00
Type	Single Family
Sub-Type	Vacant Lot/Land
Status	Active

Community Information

Address	105 161 Ave Nw
Area	Edmonton
Subdivision	Rural North East South Sturgeon
City	Edmonton
County	ALBERTA

Province AB
Postal Code T5Y 6M2

Exterior

Exterior Features Flat Site, Treed Lot

Additional Information

Date Listed May 23rd, 2025
Days on Market 15
Zoning Zone 51

DATA IS DEEMED RELIABLE BUT IS NOT GUARANTEED ACCURATE BY THE REALTORS® ASSOCIATION OF EDMONTON. COPYRIGHT 2025 BY THE REALTORS® ASSOCIATION OF EDMONTON. ALL RIGHTS RESERVED.Trademarks are owned or controlled by the Canadian Real Estate Association (CREA) and identify real estate professionals who are members of CREA (REALTOR®, REALTORS®) and/or the quality of services they provide (MLS®, Multiple Listing Service®)
Listing information last updated on June 7th, 2025 at 8:02am MDT