

\$539,000 - 11839 8 Avenue, Edmonton

MLS® #E4438957

\$539,000

4 Bedroom, 3.00 Bathroom, 1,230 sqft

Single Family on 0.00 Acres

Twin Brooks, Edmonton, AB

Welcome to this charming bi-level home located in the highly desirable community of Twin Brooks—a family-friendly neighborhood celebrated for its natural surroundings and convenient amenities. Thoughtfully designed, this home features two spacious bedrooms and two full bathrooms on the main floor. The kitchen is equipped with an upgraded quartz countertop, perfect for both everyday cooking and entertaining. The primary bedroom offers a private ensuite and a walk-in closet, ideal for comfortable family living or hosting guests. Step into the bright and airy main living area, where vaulted ceilings create an enhanced sense of space and light. The fully finished basement expands the living space with two additional bedrooms, a full bathroom, and a cozy living room complete with a gas fireplace—perfect for use as a home office, gym, or guest suite. Additional highlights include a double attached garage for secure parking and extra storage for added convenience. Welcome home!

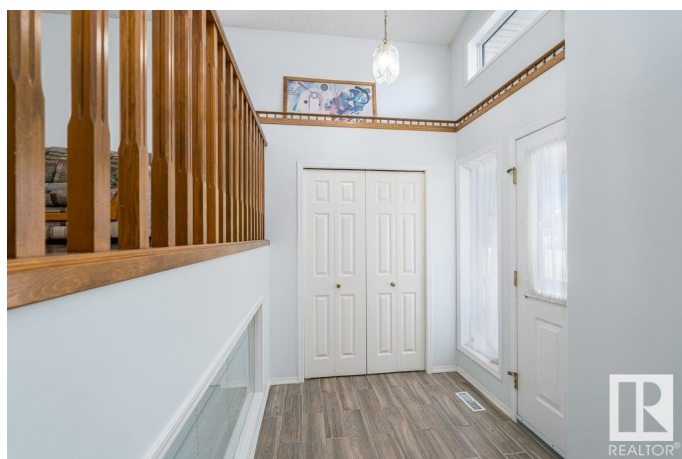
Built in 1997

Essential Information

MLS® # E4438957

Price \$539,000

Bedrooms 4



Bathrooms	3.00
Full Baths	3
Square Footage	1,230
Acres	0.00
Year Built	1997
Type	Single Family
Sub-Type	Detached Single Family
Style	Bi-Level
Status	Active

Community Information

Address	11839 8 Avenue
Area	Edmonton
Subdivision	Twin Brooks
City	Edmonton
County	ALBERTA
Province	AB
Postal Code	T6J 6Z9

Amenities

Amenities	Deck
Parking Spaces	4
Parking	Double Garage Attached

Interior

Interior Features	ensuite bathroom
Appliances	Dishwasher-Built-In, Dryer, Garage Control, Garage Opener, Hood Fan, Refrigerator, Stove-Electric, Washer, Window Coverings
Heating	Forced Air-1, Natural Gas
Stories	2
Has Basement	Yes
Basement	Full, Finished

Exterior

Exterior	Wood, Vinyl
Exterior Features	Back Lane, Fenced, Landscaped, Playground Nearby, Public Transportation, Schools, Shopping Nearby
Roof	Asphalt Shingles
Construction	Wood, Vinyl

Foundation Concrete Perimeter

School Information

Elementary George P. Nicholson School
Middle D.S. MacKenzie School
High Harry Ainlay School

Additional Information

Date Listed May 28th, 2025
Days on Market 19
Zoning Zone 16

DATA IS DEEMED RELIABLE BUT IS NOT GUARANTEED ACCURATE BY THE REALTORS® ASSOCIATION OF EDMONTON. COPYRIGHT 2025 BY THE REALTORS® ASSOCIATION OF EDMONTON. ALL RIGHTS RESERVED.Trademarks are owned or controlled by the Canadian Real Estate Association (CREA) and identify real estate professionals who are members of CREA (REALTOR®, REALTORS®) and/or the quality of services they provide (MLS®, Multiple Listing Service®)
Listing information last updated on June 16th, 2025 at 7:17pm MDT