

\$349,000 - 4733 105 Street, Edmonton

MLS® #E4440855

\$349,000

3 Bedroom, 1.50 Bathroom, 1,192 sqft

Single Family on 0.00 Acres

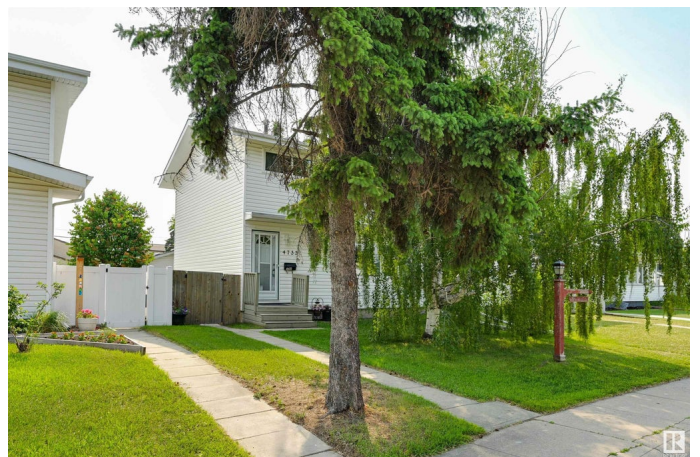
Empire Park, Edmonton, AB

Spacious Duplex in Desirable Empire Park! Nestled in a quiet, family-friendly neighbourhood in south-central Edmonton, this well-located home is just minutes from schools, shopping, transit, and all major amenities. The main floor features a bright and generous living room with views of mature front-yard trees, and a large upgraded kitchen with plenty of workspace and direct access to a massive back deck—ideal for entertaining or relaxing outdoors. A convenient main-floor bathroom completes the level. Upstairs, you'll find three well-proportioned bedrooms and a full bathroom—perfect for a growing family. The basement is unfinished and ready for your personal touch. Outside, enjoy a huge, private yard and a newer double garage offering loads of storage and parking space. A fantastic opportunity in a prime central location!

Built in 1965

Essential Information

MLS® #	E4440855
Price	\$349,000
Bedrooms	3
Bathrooms	1.50
Full Baths	1
Half Baths	1



Square Footage	1,192
Acres	0.00
Year Built	1965
Type	Single Family
Sub-Type	Half Duplex
Style	2 Storey
Status	Active

Community Information

Address	4733 105 Street
Area	Edmonton
Subdivision	Empire Park
City	Edmonton
County	ALBERTA
Province	AB
Postal Code	T6H 2M3

Amenities

Amenities	Deck, Vinyl Windows
Parking	Double Garage Detached

Interior

Appliances	Dishwasher-Built-In, Dryer, Refrigerator, Stove-Electric, Washer
Heating	Forced Air-1, Natural Gas
Stories	2
Has Basement	Yes
Basement	Full, Unfinished

Exterior

Exterior	Wood, Vinyl
Exterior Features	Landscaped, Park/Reserve, Playground Nearby, Public Transportation, Schools, Shopping Nearby
Roof	Asphalt Shingles
Construction	Wood, Vinyl
Foundation	Concrete Perimeter

Additional Information

Date Listed	June 6th, 2025
Days on Market	10

Zoning

Zone 15

DATA IS DEEMED RELIABLE BUT IS NOT GUARANTEED ACCURATE BY THE REALTORS® ASSOCIATION OF EDMONTON. COPYRIGHT 2025 BY THE REALTORS® ASSOCIATION OF EDMONTON. ALL RIGHTS RESERVED. Trademarks are owned or controlled by the Canadian Real Estate Association (CREA) and identify real estate professionals who are members of CREA (REALTOR®, REALTORS®) and/or the quality of services they provide (MLS®, Multiple Listing Service®)

Listing information last updated on June 16th, 2025 at 4:47am MDT