

\$1,998,800 - 54 Windermere Drive, Edmonton

MLS® #E4441388

\$1,998,800

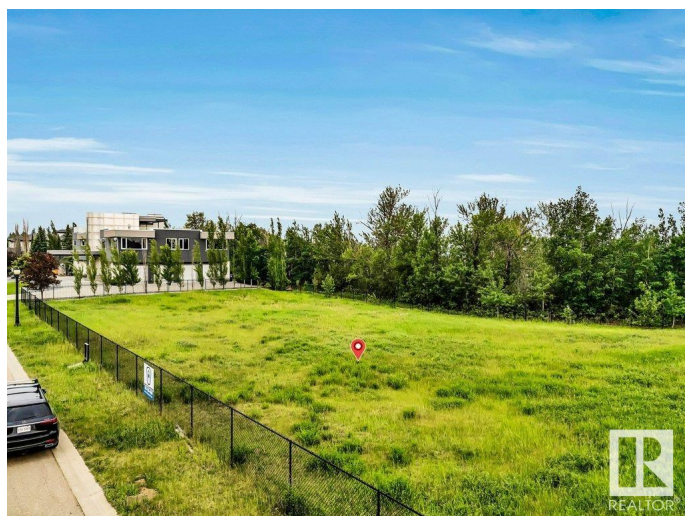
0 Bedroom, 0.00 Bathroom,
Single Family on 0.00 Acres

Windermere, Edmonton, AB

Welcome to Windermere! Welcome to an extraordinary opportunity to own a vacant lot in one of Edmonton's most coveted communities – Windermere Ridge. This expansive 0.61-acre (over 2,468 square meters) parcel of land is situated in a premier location, offering the perfect canvas to build your luxury dream home. Nestled in a serene & private setting, the lot backs onto a lush treed area w/ breathtaking green space views, creating a peaceful natural retreat right in your backyard. Enjoy the scenic beauty of the North Saskatchewan River & the prestigious River Ridge Golf and Country Club, just a stone's throw away. This location is truly a golfer's and nature lover's paradise. Located in one of the finest neighbourhoods in Edmonton, Windermere Ridge is renowned for its exclusivity, upscale homes & unparalleled lifestyle. This lot not only offers privacy & tranquility, but also easy access to top-tier amenities, shopping, fine dining, top-rated schools, & major roadways!

Essential Information

| | |
|-----------|-------------|
| MLS® # | E4441388 |
| Price | \$1,998,800 |
| Bathrooms | 0.00 |
| Acres | 0.00 |



| | |
|----------|-----------------|
| Type | Single Family |
| Sub-Type | Vacant Lot/Land |
| Status | Active |

Community Information

| | |
|-------------|---------------------|
| Address | 54 Windermere Drive |
| Area | Edmonton |
| Subdivision | Windermere |
| City | Edmonton |
| County | ALBERTA |
| Province | AB |
| Postal Code | T6W 0S1 |

Exterior

| | |
|-------------------|------------------------------------------------------------------------------------------------------------------------------------------------------------------------------------|
| Exterior Features | Airport Nearby, Backs Onto Park/Trees, Fenced, Flat Site, Fruit Trees/Shrubs, Golf Nearby, Park/Reserve, Public Transportation, Ravine View, Schools, Shopping Nearby, See Remarks |
| Lot Description | 0.61 Acr |

School Information

| | |
|------------|-----------------------|
| Elementary | Const. Daniel Woodall |
| Middle | Riverbend School |
| High | Lilian Osborne School |

Additional Information

| | |
|----------------|----------------|
| Date Listed | June 9th, 2025 |
| Days on Market | 55 |
| Zoning | Zone 56 |

DATA IS DEEMED RELIABLE BUT IS NOT GUARANTEED ACCURATE BY THE REALTORS® ASSOCIATION OF EDMONTON. COPYRIGHT 2025 BY THE REALTORS® ASSOCIATION OF EDMONTON. ALL RIGHTS RESERVED. Trademarks are owned or controlled by the Canadian Real Estate Association (CREA) and identify real estate professionals who are members of CREA (REALTOR®, REALTORS®) and/or the quality of services they provide (MLS®, Multiple Listing Service®)

Listing information last updated on August 3rd, 2025 at 9:17am MDT