

\$499,000 - 78 Woodhaven Drive, Spruce Grove

MLS® #E4441579

\$499,000

4 Bedroom, 2.00 Bathroom, 1,162 sqft

Single Family on 0.00 Acres

Woodhaven_SPGR, Spruce Grove, AB

This beautifully renovated family home offers over 2,200 sq ft of developed living space and is walking distance to schools. Step inside to discover a thoughtfully updated interior featuring a new kitchen with SS appliances, custom cabinetry, and a live-edge breakfast bar! The feeling of love and comfort is in every inch of this home. The spacious primary suite features a custom King-size built-in with LED lighting, creating a serene retreat. Additional upgrades include a new OSBURN High Efficiency fireplace insert, new exterior doors, 2 new windows, new bathrooms, a rainshower, new flooring, lighting, and a NEW 8" concrete pad. You can park 7 cars here! Outside, enjoy a massive 450 sq. ft. red cedar deck with a pergola, perfect for entertaining, and a beautifully landscaped yard with room for a garden. The TRIPLE garage is packed full of cabinets and storage, with 3 doors, BRIGHT lighting, and 2 WIFI-enabled openers. This home exudes warmth and modern charm and is in a quiet & established area.

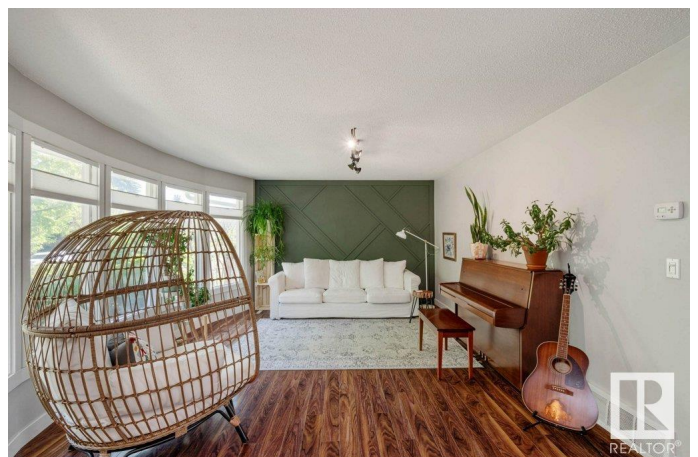
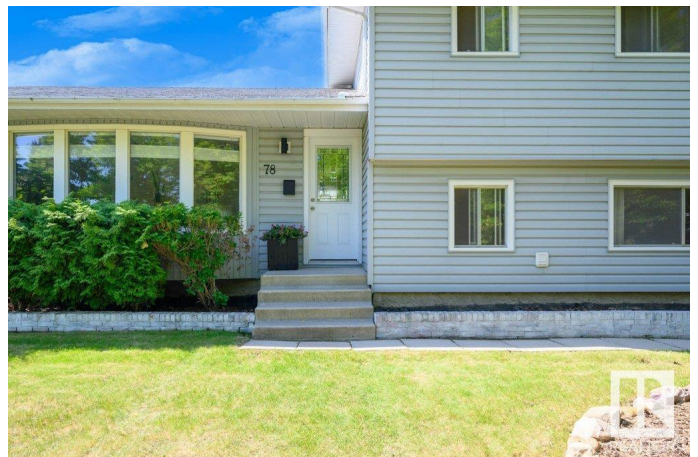
Built in 1974

Essential Information

MLS® # E4441579

Price \$499,000

Bedrooms 4



Bathrooms	2.00
Full Baths	2
Square Footage	1,162
Acres	0.00
Year Built	1974
Type	Single Family
Sub-Type	Detached Single Family
Style	4 Level Split
Status	Active

Community Information

Address	78 Woodhaven Drive
Area	Spruce Grove
Subdivision	Woodhaven_SPGR
City	Spruce Grove
County	ALBERTA
Province	AB
Postal Code	T7X 1M7

Amenities

Amenities	On Street Parking, Crawl Space, Deck, Detectors Smoke, No Animal Home, No Smoking Home
Parking Spaces	7
Parking	220 Volt Wiring, Heated, Insulated, Triple Garage Detached

Interior

Appliances	Dishwasher-Built-In, Dryer, Fan-Ceiling, Garage Control, Garage Opener, Hood Fan, Microwave Hood Fan, Refrigerator, Stove-Electric, Washer, Window Coverings, TV Wall Mount
Heating	Forced Air-1, Natural Gas
Fireplace	Yes
Fireplaces	Insert, Mantel, Stone Facing
Stories	4
Has Basement	Yes
Basement	Partial, Finished

Exterior

Exterior	Wood, Stucco, Vinyl
Exterior Features	Back Lane, Fenced, Landscaped, Playground Nearby, Schools

Roof	Asphalt Shingles
Construction	Wood, Stucco, Vinyl
Foundation	Concrete Perimeter

School Information

Elementary	Millgrove
Middle	Woodhaven
High	Composite

Additional Information

Date Listed	June 10th, 2025
Days on Market	6
Zoning	Zone 91

DATA IS DEEMED RELIABLE BUT IS NOT GUARANTEED ACCURATE BY THE REALTORS® ASSOCIATION OF EDMONTON. COPYRIGHT 2025 BY THE REALTORS® ASSOCIATION OF EDMONTON. ALL RIGHTS RESERVED. Trademarks are owned or controlled by the Canadian Real Estate Association (CREA) and identify real estate professionals who are members of CREA (REALTOR®, REALTORS®) and/or the quality of services they provide (MLS®, Multiple Listing Service®)

Listing information last updated on June 15th, 2025 at 11:47pm MDT