

Courtesy Of David Lam Of Exp Realty

\$384,900 - 161 804 Welsh Drive, Edmonton

MLS® #E4442162

\$384,900

3 Bedroom, 2.50 Bathroom, 1,428 sqft

Condo / Townhouse on 0.00 Acres

Walker, Edmonton, AB

Looking for that perfect end-unit townhome? This stylish 3 bed+den, 2.5 bath gem in Walker Lakes has it all. Enjoy the extra privacy of only one shared wall, a double attached garage & a fenced front yard. Step into the open-concept main floor with soaring 9'™ ceilings and luxury vinyl plank flooring throughout. The modern white kitchen shines with quartz countertops, upgraded stainless steel appliances, tiled backsplash & a large island—ideal for entertaining. The bright dining & living areas are anchored by a sleek linear fireplace & flow onto a private balcony, perfect for BBQs or evening lounging. Upstairs, the primary suite features a walk-in closet & ensuite, with two additional bedrooms & a full bath nearby. On the entry level, you'll find a multi-purpose flex space—perfect for a home office, gym, or a guest bedroom. Located within walking distance to parks, trails, schools, and transit, with easy access to shopping & major routes. This home delivers modern comfort with unbeatable convenience.

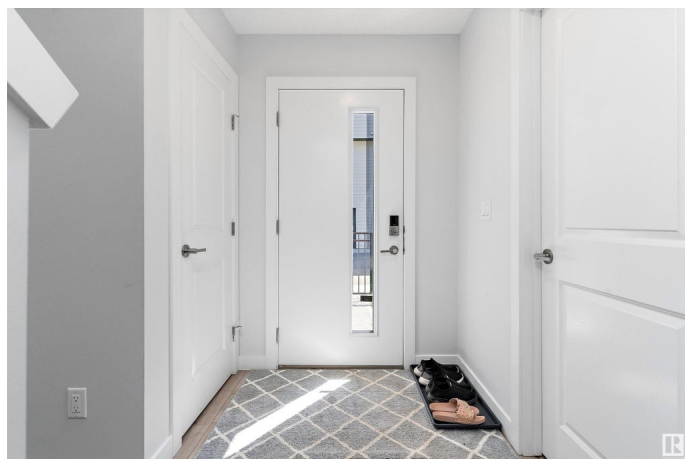
Built in 2021

Essential Information

MLS® # E4442162

Price \$384,900

Bedrooms 3



Bathrooms	2.50
Full Baths	2
Half Baths	1
Square Footage	1,428
Acres	0.00
Year Built	2021
Type	Condo / Townhouse
Sub-Type	Townhouse
Style	3 Storey
Status	Active

Community Information

Address	161 804 Welsh Drive
Area	Edmonton
Subdivision	Walker
City	Edmonton
County	ALBERTA
Province	AB
Postal Code	T6X 1Y8

Amenities

Amenities	See Remarks
Parking	Double Garage Attached

Interior

Interior Features	ensuite bathroom
Appliances	Dishwasher-Built-In, Dryer, Microwave Hood Fan, Refrigerator, Stove-Electric, Washer
Heating	Forced Air-1, Natural Gas
Fireplace	Yes
Fireplaces	Insert
Stories	3
Has Basement	Yes
Basement	None, No Basement

Exterior

Exterior	Wood, Vinyl
Exterior Features	Back Lane, Schools, Shopping Nearby
Roof	Asphalt Shingles

Construction	Wood, Vinyl
Foundation	Concrete Perimeter

Additional Information

Date Listed	June 13th, 2025
Days on Market	3
Zoning	Zone 53
Condo Fee	\$166

DATA IS DEEMED RELIABLE BUT IS NOT GUARANTEED ACCURATE BY THE REALTORS® ASSOCIATION OF EDMONTON. COPYRIGHT 2025 BY THE REALTORS® ASSOCIATION OF EDMONTON. ALL RIGHTS RESERVED.Trademarks are owned or controlled by the Canadian Real Estate Association (CREA) and identify real estate professionals who are members of CREA (REALTOR®, REALTORS®) and/or the quality of services they provide (MLS®, Multiple Listing Service®)

Listing information last updated on June 16th, 2025 at 7:17pm MDT