

\$435,000 - 1060 Watt Promenade Promenade, Edmonton

MLS® #E4442212

\$435,000

3 Bedroom, 2.50 Bathroom, 1,535 sqft
Single Family on 0.00 Acres

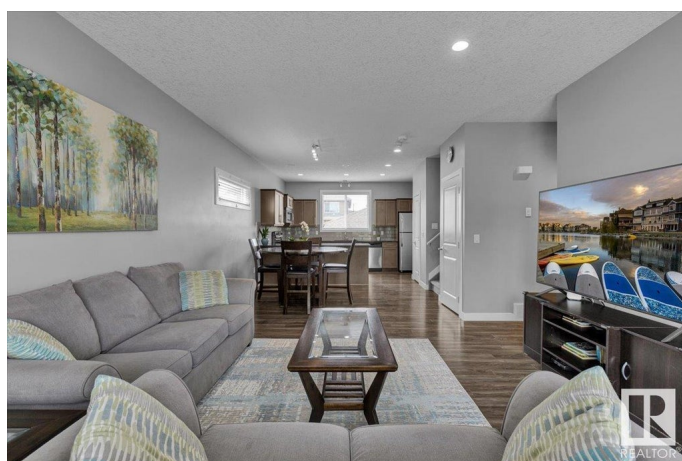
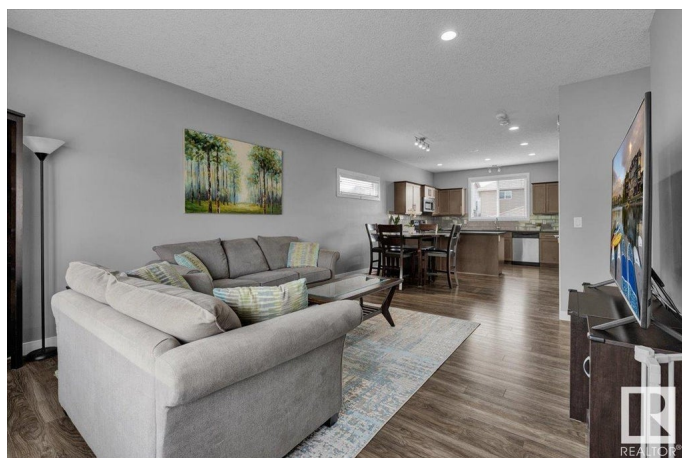
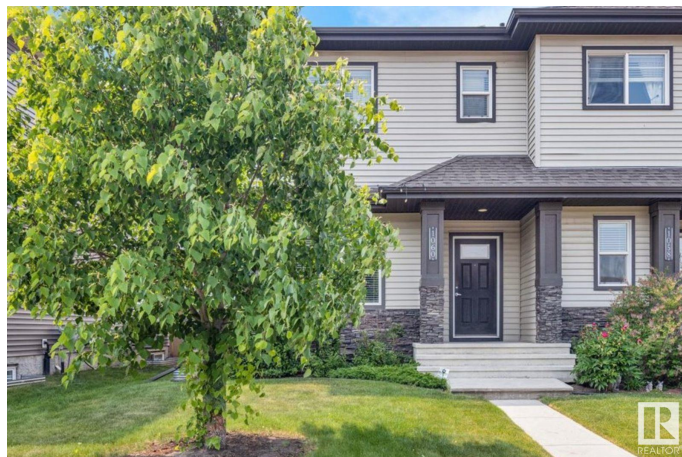
Walker, Edmonton, AB

Fantastic home in like new condition! Spacious floor plan with kitchen open to dining area and great room. Modern kitchen with granite counters, tile backsplash and stainless steel appliances. Large primary bedroom with walk in closet and full ensuite bath. Additional features include central air conditioning, main floor laundry and revised deck. Shows extremely well! For more details please visit the REALTOR®'s Website.

Built in 2014

Essential Information

| | |
|----------------|---------------|
| MLS® # | E4442212 |
| Price | \$435,000 |
| Bedrooms | 3 |
| Bathrooms | 2.50 |
| Full Baths | 2 |
| Half Baths | 1 |
| Square Footage | 1,535 |
| Acres | 0.00 |
| Year Built | 2014 |
| Type | Single Family |
| Sub-Type | Half Duplex |
| Style | 2 Storey |
| Status | Active |



Community Information

| | |
|-------------|-------------------------------|
| Address | 1060 Watt Promenade Promenade |
| Area | Edmonton |
| Subdivision | Walker |
| City | Edmonton |
| County | ALBERTA |
| Province | AB |
| Postal Code | T6X 1T7 |

Amenities

| | |
|----------------|------------------------|
| Amenities | Air Conditioner, Deck |
| Parking Spaces | 4 |
| Parking | Double Garage Detached |

Interior

| | |
|-------------------|--|
| Interior Features | ensuite bathroom |
| Appliances | Dishwasher-Built-In, Dryer, Garage Control, Garage Opener, Refrigerator, Stove-Electric, Washer, Curtains and Blinds |
| Heating | Forced Air-1, Natural Gas |
| Stories | 2 |
| Has Basement | Yes |
| Basement | Full, Unfinished |

Exterior

| | |
|-------------------|---|
| Exterior | Wood, Stone, Vinyl |
| Exterior Features | Back Lane, Landscaped, Playground Nearby, Public Transportation, Schools, Shopping Nearby |
| Roof | Asphalt Shingles |
| Construction | Wood, Stone, Vinyl |
| Foundation | Concrete Perimeter |

School Information

| | |
|------------|---------------------------|
| Elementary | Shauna May/Corpus Christi |
| Middle | Shauna May/Corpus Christi |
| High | Elder Dr. F/Holy Trinity |

Additional Information

| | |
|----------------|-----------------|
| Date Listed | June 13th, 2025 |
| Days on Market | 3 |
| Zoning | Zone 53 |

HOA Fees 100

HOA Fees Freq. Annually

DATA IS DEEMED RELIABLE BUT IS NOT GUARANTEED ACCURATE BY THE REALTORS® ASSOCIATION OF EDMONTON. COPYRIGHT 2025 BY THE REALTORS® ASSOCIATION OF EDMONTON. ALL RIGHTS RESERVED. Trademarks are owned or controlled by the Canadian Real Estate Association (CREA) and identify real estate professionals who are members of CREA (REALTOR®, REALTORS®) and/or the quality of services they provide (MLS®, Multiple Listing Service®)

Listing information last updated on June 16th, 2025 at 11:32am MDT