

\$674,800 - 107 Edgefield Way, St. Albert

MLS® #E4443541

\$674,800

5 Bedroom, 3.50 Bathroom, 1,857 sqft
Single Family on 0.00 Acres

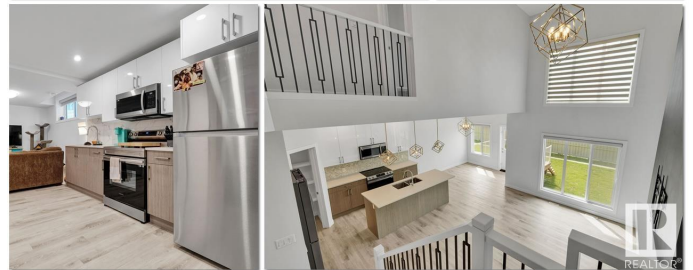
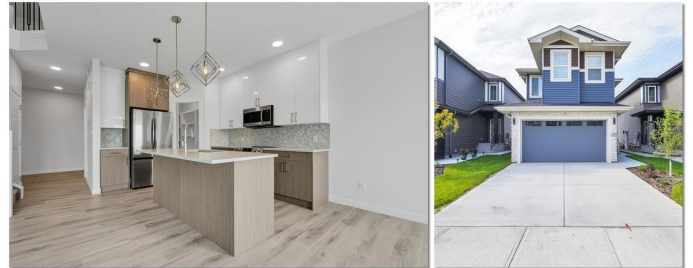
Erin Ridge North, St. Albert, AB

Welcome to this absolutely stunning home with LEGAL & PERMITTED 2 BDRM BASEMET SUITE - truly a 10/10! From the moment you step into the spacious front entry, youâ€™™ll be impressed by the show home-level finishes throughout. The kitchen is a standout feature w/beautiful white ceiling-height cabinets, quartz countertops, a massive pantry & large island w/eating bar- perfect for entertaining. The living room boasts soaring ceilings that create a bright & open atmosphere, while the stylish & modern design flows seamlessly through the entire main level. Mudroom area, dble attached garage & 2-pce powder room round out the main floor. Upstairs, the generous primary suite includes a walk-in closet & spa-like ensuite. 2 additional bdrms, a full 4-pce bathroom, a bonus room & upstairs laundry offer practical and luxurious living for the whole family. The basement adds incredible income potential with a legal 2-bdrm suite -complete w/its own kitchen, Quartz counters, high ceilings & laundry space. Amazing opportunity!

Built in 2023

Essential Information

MLS® #	E4443541
Price	\$674,800



Bedrooms	5
Bathrooms	3.50
Full Baths	3
Half Baths	1
Square Footage	1,857
Acres	0.00
Year Built	2023
Type	Single Family
Sub-Type	Detached Single Family
Style	2 Storey
Status	Active

Community Information

Address	107 Edgefield Way
Area	St. Albert
Subdivision	Erin Ridge North
City	St. Albert
County	ALBERTA
Province	AB
Postal Code	T8N 7Z9

Amenities

Amenities	Ceiling 9 ft., Deck
Parking Spaces	4
Parking	Double Garage Attached

Interior

Interior Features	ensuite bathroom
Appliances	Garage Control, Garage Opener, Window Coverings, Dryer-Two, Refrigerators-Two, Stoves-Two, Washers-Two, Dishwasher-Two
Heating	Forced Air-1, Natural Gas
Fireplace	Yes
Fireplaces	See Remarks
Stories	3
Has Suite	Yes
Has Basement	Yes
Basement	Full, Finished

Exterior

Exterior	Wood, Vinyl
Exterior Features	Fenced, Playground Nearby, Public Transportation, Schools, Shopping Nearby
Roof	Asphalt Shingles
Construction	Wood, Vinyl
Foundation	Concrete Perimeter

School Information

Elementary	Lois E Hole
Middle	Lorne Akins, Joseph Demko
High	Paul Kane, ESSMY

Additional Information

Date Listed	June 20th, 2025
Days on Market	60
Zoning	Zone 24

DATA IS DEEMED RELIABLE BUT IS NOT GUARANTEED ACCURATE BY THE REALTORS® ASSOCIATION OF EDMONTON. COPYRIGHT 2025 BY THE REALTORS® ASSOCIATION OF EDMONTON. ALL RIGHTS RESERVED. Trademarks are owned or controlled by the Canadian Real Estate Association (CREA) and identify real estate professionals who are members of CREA (REALTOR®, REALTORS®) and/or the quality of services they provide (MLS®, Multiple Listing Service®)

Listing information last updated on August 19th, 2025 at 3:02am MDT