

\$519,900 - 25 55 Clarkdale Drive, Sherwood Park

MLS® #E4443689

\$519,900

2 Bedroom, 3.00 Bathroom, 1,216 sqft
Condo / Townhouse on 0.00 Acres

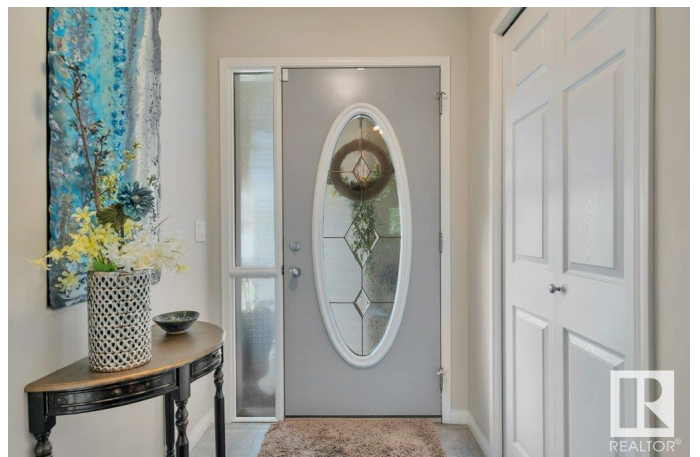
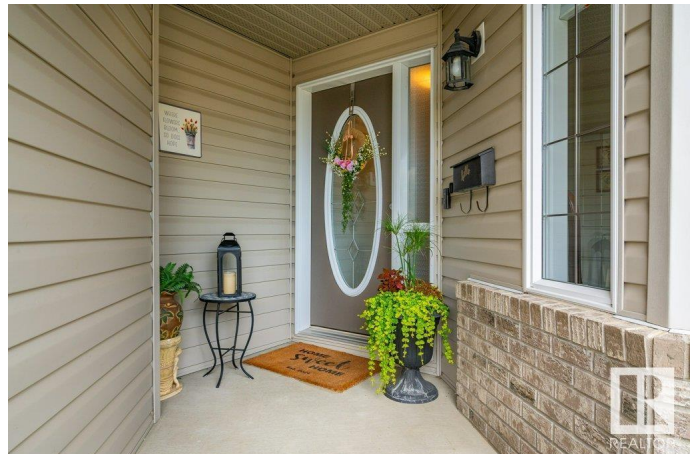
Clarkdale Meadows, Sherwood Park, AB

IMMACULATE executive bungalow in the desirable community of Clarkdale Shores, steps away from trails around Clarkdale Pond & parks. You are invited in to find gorgeous hardwood flooring that leads through a functional layout with vaulted ceilings. The kitchen offers plenty of cabinets & quartz island that looks over the dining & living room with cozy fireplace. King sized primary suite with walk in closet & 3pc ensuite. Good sized den with Murphy Bed, 4pc bath & laundry room complement the functional layout. The basement is partially finished with 2nd bedroom & 3pc bath, with room for ample storage or future rec room. Love the west facing NEW deck to sit out and enjoy the evenings. NEWER ROOF & NEW FURNACE. This is the perfect place to downsize too & call home with a well managed 55+ complex that is pet friendly!

Built in 2002

Essential Information

MLS® #	E4443689
Price	\$519,900
Bedrooms	2
Bathrooms	3.00
Full Baths	3
Square Footage	1,216



Acres	0.00
Year Built	2002
Type	Condo / Townhouse
Sub-Type	Half Duplex
Style	Bungalow
Status	Active

Community Information

Address	25 55 Clarkdale Drive
Area	Sherwood Park
Subdivision	Clarkdale Meadows
City	Sherwood Park
County	ALBERTA
Province	AB
Postal Code	T8B 2J1

Amenities

Amenities	Deck, Parking-Visitor, Vaulted Ceiling, See Remarks
Parking	Double Garage Attached

Interior

Interior Features	ensuite bathroom
Appliances	Air Conditioning-Central, Dishwasher-Built-In, Dryer, Microwave Hood Fan, Refrigerator, Stove-Electric, Vacuum System Attachments, Vacuum Systems, Washer, Window Coverings
Heating	Forced Air-1, Natural Gas
Fireplace	Yes
Fireplaces	Tile Surround
Stories	1
Has Basement	Yes
Basement	Full, Partially Finished

Exterior

Exterior	Wood, Brick, Vinyl
Exterior Features	Landscaped, Playground Nearby, Public Transportation, Schools, Shopping Nearby, See Remarks
Roof	Asphalt Shingles
Construction	Wood, Brick, Vinyl
Foundation	Concrete Perimeter

Additional Information

Date Listed	June 21st, 2025
Days on Market	10
Zoning	Zone 25
Condo Fee	\$450

DATA IS DEEMED RELIABLE BUT IS NOT GUARANTEED ACCURATE BY THE REALTORS® ASSOCIATION OF EDMONTON. COPYRIGHT 2025 BY THE REALTORS® ASSOCIATION OF EDMONTON. ALL RIGHTS RESERVED.Trademarks are owned or controlled by the Canadian Real Estate Association (CREA) and identify real estate professionals who are members of CREA (REALTOR®, REALTORS®) and/or the quality of services they provide (MLS®, Multiple Listing Service®)

Listing information last updated on July 1st, 2025 at 12:32pm MDT