

\$1,898,000 - 5121 Woolsey Link Link, Edmonton

MLS® #E4444853

\$1,898,000

5 Bedroom, 6.00 Bathroom, 3,851 sqft
Single Family on 0.00 Acres

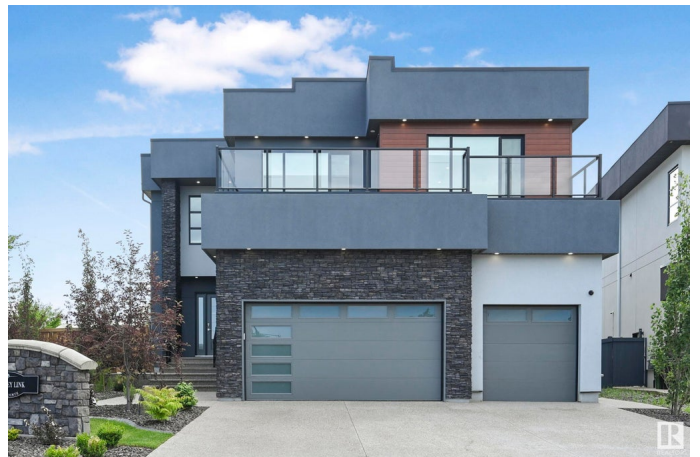
Windermere, Edmonton, AB

Gorgeous fully finished estate home in Westpointe of Windermere. Nearly 5500sf of luxury finishes complete with 5 bedrooms +2 flex rooms, 6 bathrooms, 3 living areas, 2 kitchens +wet bar & triple garage. 20' foyer & an open tread glass railing staircase welcomes you through a naturally lit, contemporary home with numerous upgrades throughout. Great room with modern 6' linear fireplace feature wall. Sleek chef's kitchen with ample storage, quartz counters, extended cabinetry wall, upgraded appliances & secondary prep kitchen. Full dining nook with direct access to covered deck for evening bbq's. Convenient main floor den/bedroom with ensuite. Upper level bonus,Â open to below, 4 generous sized bedrooms, each with access to their own ensuites & upper laundry room. Primary bedroom will accommodate any furniture arrangement & features a covered balcony, spa 5pc ensuite & walk-in dressing room. Basement highlights multiple recreation areas, wetbar, 5th bedroom, exerciseÂ room & 3pc bathroom. Shows a 10!

Built in 2022

Essential Information

MLS® #	E4444853
Price	\$1,898,000



Bedrooms	5
Bathrooms	6.00
Full Baths	6
Square Footage	3,851
Acres	0.00
Year Built	2022
Type	Single Family
Sub-Type	Detached Single Family
Style	2 Storey
Status	Active

Community Information

Address	5121 Woolsey Link Link
Area	Edmonton
Subdivision	Windermere
City	Edmonton
County	ALBERTA
Province	AB
Postal Code	T6W 2C1

Amenities

Amenities	Air Conditioner, Ceiling 10 ft., Ceiling 9 ft., Closet Organizers, Deck, No Animal Home, No Smoking Home, Patio, Wet Bar
Parking Spaces	6
Parking	Triple Garage Attached

Interior

Interior Features	ensuite bathroom
Appliances	Air Conditioning-Central, Alarm/Security System, Dishwasher-Built-In, Dryer, Garage Control, Garage Opener, Hood Fan, Oven-Built-In, Oven-Microwave, Refrigerator, Stove-Countertop Gas, Stove-Gas, Washer, Window Coverings, See Remarks
Heating	Forced Air-1, Natural Gas
Fireplace	Yes
Fireplaces	See Remarks
Stories	3
Has Basement	Yes
Basement	Full, Finished

Exterior

Exterior	Wood, See Remarks, Stucco
Exterior Features	Cul-De-Sac, Fenced, Golf Nearby, Landscaped, Playground Nearby, Public Transportation, Schools, Shopping Nearby, See Remarks
Roof	Asphalt Shingles
Construction	Wood, See Remarks, Stucco
Foundation	Concrete Perimeter

School Information

Elementary	Constable Daniel/St. John
Middle	Riverbend/St. John
High	Lillian Osborne

Additional Information

Date Listed	June 26th, 2025
Days on Market	58
Zoning	Zone 56
HOA Fees	525
HOA Fees Freq.	Annually

DATA IS DEEMED RELIABLE BUT IS NOT GUARANTEED ACCURATE BY THE REALTORS® ASSOCIATION OF EDMONTON. COPYRIGHT 2025 BY THE REALTORS® ASSOCIATION OF EDMONTON. ALL RIGHTS RESERVED. Trademarks are owned or controlled by the Canadian Real Estate Association (CREA) and identify real estate professionals who are members of CREA (REALTOR®, REALTORS®) and/or the quality of services they provide (MLS®, Multiple Listing Service®)

Listing information last updated on August 22nd, 2025 at 11:17pm MDT