

\$145,000 - 14217 32 Street, Edmonton

MLS® #E4446443

\$145,000

3 Bedroom, 1.50 Bathroom, 1,060 sqft

Condo / Townhouse on 0.00 Acres

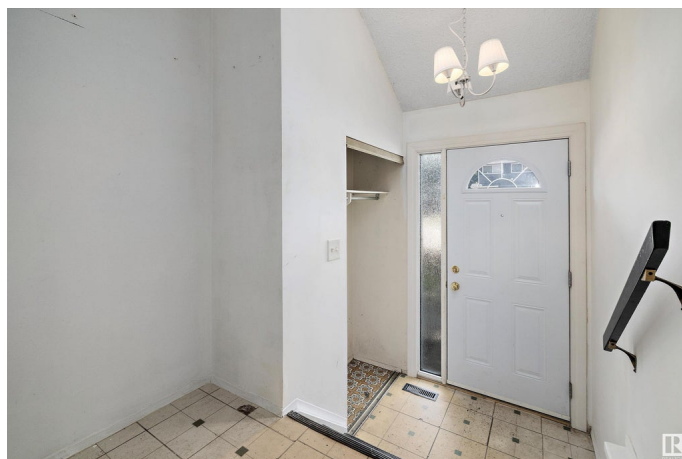
Hairsine, Edmonton, AB

Opportunity knocks in this two-storey home located in a convenient community setting. Offering over 1,000 square feet above grade, this property features a functional main floor layout with a front living room, a kitchen with space for dining, and a convenient half bath. Upstairs, you'll find three bedrooms and a full bathroom. The unfinished basement offers potential for future development. Outside, enjoy a small fenced yard with space for outdoor enjoyment. This home is being sold as-is, where-is, and presents a great opportunity for buyers with vision to make it their own.

Built in 1978

Essential Information

MLS® #	E4446443
Price	\$145,000
Bedrooms	3
Bathrooms	1.50
Full Baths	1
Half Baths	1
Square Footage	1,060
Acres	0.00
Year Built	1978
Type	Condo / Townhouse
Sub-Type	Townhouse



Style	2 Storey
Status	Active

Community Information

Address	14217 32 Street
Area	Edmonton
Subdivision	Hairsine
City	Edmonton
County	ALBERTA
Province	AB
Postal Code	T5Y 1H3

Amenities

Amenities	See Remarks
Parking	Stall

Interior

Appliances	None, See Remarks
Heating	Forced Air-1, Natural Gas
Stories	2
Has Basement	Yes
Basement	Full, Unfinished

Exterior

Exterior	Wood, Composition
Exterior Features	Public Transportation, Schools, Shopping Nearby
Roof	Asphalt Shingles
Construction	Wood, Composition
Foundation	Concrete Perimeter

Additional Information

Date Listed	July 8th, 2025
Days on Market	1
Zoning	Zone 35
RE / Bank Owned	Yes
Condo Fee	\$455

DATA IS DEEMED RELIABLE BUT IS NOT GUARANTEED ACCURATE BY THE REALTORS® ASSOCIATION OF EDMONTON. COPYRIGHT 2025 BY THE REALTORS® ASSOCIATION OF EDMONTON. ALL RIGHTS RESERVED. Trademarks are owned or controlled by the Canadian Real Estate Association (CREA) and identify real estate professionals who are members of CREA (REALTOR®, REALTORS®) and/or the quality of services they

provide (MLS®®, Multiple Listing Service®®)
Listing information last updated on July 9th, 2025 at 3:17pm MDT