

\$415,000 - 16352 119 Street, Edmonton

MLS® #E4447275

\$415,000

4 Bedroom, 2.00 Bathroom, 1,183 sqft

Single Family on 0.00 Acres

Dunluce, Edmonton, AB

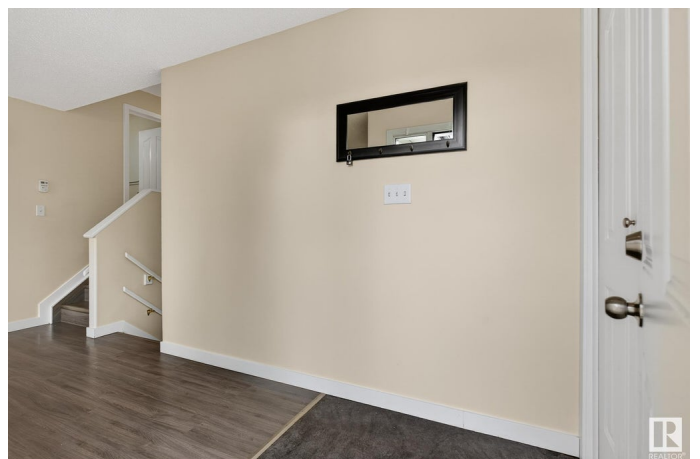
Welcome to this affordable, well-maintained, and upgraded home in the desirable community of Dunluce! Perfect for families or first-time buyers, this 4 bedroom, 2 bathroom home offers incredible value with recent updates that include new shingles, windows, doors, a new furnace, and a fully renovated kitchen. The bright living room flows effortlessly into the kitchen and dining area, making it ideal for everyday living and entertaining. The main floor hosts the spacious primary bedroom, two additional guest bedrooms, and a beautifully updated 5-piece bathroom. Downstairs, youâ€™ll find a cozy rec room complete with a wood-burning fireplace, a 4th bedroom, a den or office space, and a 3-piece bathroom. Enjoy the double detached garage and fenced backyard with room to garden, play, or relax, and take advantage of the nearby schools, shopping centers, parks, public transportation, and easy access to the Henday. All the big ticket upgrades have been complete, just move in and enjoy!

Built in 1984

Essential Information

MLS® # E4447275

Price \$415,000



Bedrooms	4
Bathrooms	2.00
Full Baths	2
Square Footage	1,183
Acres	0.00
Year Built	1984
Type	Single Family
Sub-Type	Detached Single Family
Style	4 Level Split
Status	Active

Community Information

Address	16352 119 Street
Area	Edmonton
Subdivision	Dunluce
City	Edmonton
County	ALBERTA
Province	AB
Postal Code	T5X 4T5

Amenities

Amenities	Off Street Parking, Detectors Smoke, Vinyl Windows
Parking	Double Garage Detached

Interior

Appliances	Dishwasher-Built-In, Dryer, Microwave Hood Fan, Refrigerator, Stove-Electric, Washer, Window Coverings
Heating	Forced Air-1, Natural Gas
Stories	3
Has Basement	Yes
Basement	Full, Partially Finished

Exterior

Exterior	Wood, Brick, Vinyl
Exterior Features	Back Lane, Fenced, Landscaped, Level Land, Public Swimming Pool, Schools, Shopping Nearby
Roof	Asphalt Shingles
Construction	Wood, Brick, Vinyl
Foundation	Concrete Perimeter

Additional Information

Date Listed July 11th, 2025
Days on Market 20
Zoning Zone 27

DATA IS DEEMED RELIABLE BUT IS NOT GUARANTEED ACCURATE BY THE REALTORS® ASSOCIATION OF EDMONTON. COPYRIGHT 2025 BY THE REALTORS® ASSOCIATION OF EDMONTON. ALL RIGHTS RESERVED.Trademarks are owned or controlled by the Canadian Real Estate Association (CREA) and identify real estate professionals who are members of CREA (REALTOR®, REALTORS®) and/or the quality of services they provide (MLS®, Multiple Listing Service®)
Listing information last updated on July 31st, 2025 at 11:03am MDT