

## **\$374,900 - 4788 Terwillegar Common, Edmonton**

MLS® #E4447330

**\$374,900**

3 Bedroom, 2.50 Bathroom, 1,353 sqft

Single Family on 0.00 Acres

Terwillegar Towne, Edmonton, AB

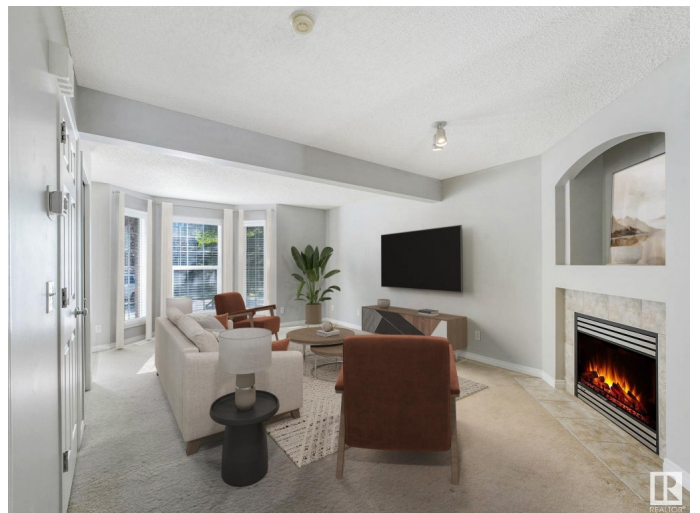
BEAUTIFUL & CLEAN townhouse in Terwillegar Towne for UNDER \$375,000 WITH NO CONDO FEES! Offering over 1,350 sqft of living space, the main floor captures an open living/kitchen/dining area with upgraded appliances (fridge/stove- 2023, dishwasher 2019), cozy fireplace, loads of cabinetry & large windows providing plenty of natural light. A half bathroom and laundry complete the main floor. Upstairs boasts a spacious primary suite with a full walk-in closet & 4pc bath. An additional 2 bedrooms, full bath & linen closet complete the main floor. The unfinished basement is awaiting your finishing touches & includes roughed-in plumbing for a future bathroom. Enjoy sunsets in your West facing backyard. Lots of space for a future garage development. Easy access to Anthony Henday Drive, Whitemud Freeway, The Currents of Windermere Shops, Riverbend Square. Enjoy walks to Remedy Cafe and other shops in Terwillegar Towne -only 2 blocks away! Don't miss this fabulous opportunity! Welcome home!

Built in 2004

### **Essential Information**

MLS® # E4447330

Price \$374,900



Bedrooms	3
Bathrooms	2.50
Full Baths	2
Half Baths	1
Square Footage	1,353
Acres	0.00
Year Built	2004
Type	Single Family
Sub-Type	Residential Attached
Style	2 Storey
Status	Active

### Community Information

Address	4788 Terwillegar Common
Area	Edmonton
Subdivision	Terwillegar Towne
City	Edmonton
County	ALBERTA
Province	AB
Postal Code	T6R 3H7

### Amenities

Amenities	Air Conditioner, Deck, No Smoking Home, Vinyl Windows
Parking Spaces	4
Parking	Parking Pad Cement/Paved

### Interior

Interior Features	ensuite bathroom
Appliances	Air Conditioning-Central, Dishwasher-Built-In, Dryer, Refrigerator, Stove-Electric, Washer, Window Coverings
Heating	Forced Air-1, Natural Gas
Fireplace	Yes
Fireplaces	Insert
Stories	2
Has Basement	Yes
Basement	Full, Unfinished

### Exterior

Exterior	Wood, Brick, Vinyl
----------	--------------------

Exterior Features	Back Lane, Fenced, Landscaped, Playground Nearby, Schools, Shopping Nearby
Roof	Asphalt Shingles
Construction	Wood, Brick, Vinyl
Foundation	Concrete Perimeter

**School Information**

Elementary	Esther Starkman School
Middle	Archbishop Joseph Macneil
High	Lillian Osborne, St. FX

**Additional Information**

Date Listed	July 11th, 2025
Days on Market	2
Zoning	Zone 14
HOA Fees	138
HOA Fees Freq.	Annually

DATA IS DEEMED RELIABLE BUT IS NOT GUARANTEED ACCURATE BY THE REALTORS® ASSOCIATION OF EDMONTON. COPYRIGHT 2025 BY THE REALTORS® ASSOCIATION OF EDMONTON. ALL RIGHTS RESERVED.Trademarks are owned or controlled by the Canadian Real Estate Association (CREA) and identify real estate professionals who are members of CREA (REALTOR®, REALTORS®) and/or the quality of services they provide (MLS®, Multiple Listing Service®)

Listing information last updated on July 12th, 2025 at 10:47pm MDT