

\$325,000 - 5210 43 Avenue, Leduc

MLS® #E4452846

\$325,000

4 Bedroom, 2.00 Bathroom, 1,135 sqft
Single Family on 0.00 Acres

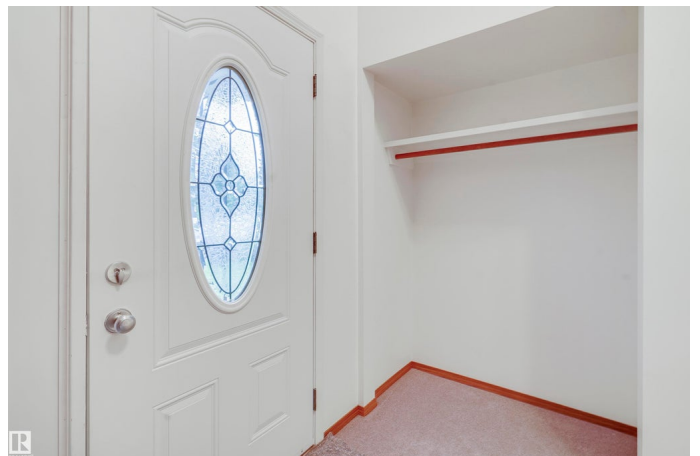
Linsford Park, Leduc, AB

Bright, functional, & ready for your next chapter in Leduc. Visit the REALTOR®'s website for more details. This welcoming bi-level home offers a smart layout with plenty of natural light & space for the whole family. The main floor features a bright living room, a functional kitchen & dining space. With 2 bedrooms on both levels, this home provides flexibility for families, guests, or setting up a home office. The fully finished lower level adds even more living space for a rec room, media area, or hobbies. The oversized double detached garage is heated & insulated which will keep your vehicles & toys warm in the winter - plus it offers excellent storage or workshop potential. There is also plenty of parking in front of the garage including room to park that RV or boat! Outside, enjoy a sizeable backyard perfect for play, gardening, or entertaining. Located in a friendly neighbourhood close to parks, schools, shopping, & major routes, this home blends comfort, convenience, and year-round practicality.

Built in 1970

Essential Information

MLS® #	E4452846
Price	\$325,000



Bedrooms	4
Bathrooms	2.00
Full Baths	2
Square Footage	1,135
Acres	0.00
Year Built	1970
Type	Single Family
Sub-Type	Detached Single Family
Style	Bi-Level
Status	Active

Community Information

Address	5210 43 Avenue
Area	Leduc
Subdivision	Linsford Park
City	Leduc
County	ALBERTA
Province	AB
Postal Code	T6E 5A6

Amenities

Amenities	Air Conditioner
Parking Spaces	2
Parking	Double Garage Detached

Interior

Appliances	Air Conditioning-Central, Dryer, Garage Control, Garage Opener, Hood Fan, Refrigerator, Stove-Electric, Washer
Heating	Forced Air-1, Natural Gas
Stories	2
Has Basement	Yes
Basement	Full, Finished

Exterior

Exterior	Wood, Vinyl
Exterior Features	Airport Nearby, Back Lane, Golf Nearby, Picnic Area, Playground Nearby, Public Transportation, Schools, Shopping Nearby
Roof	Asphalt Shingles
Construction	Wood, Vinyl

Foundation Concrete Perimeter

School Information

Elementary Linsford Park School
Middle Ecole Leduc Junior High
High Leduc Composite High

Additional Information

Date Listed August 14th, 2025
Days on Market 5
Zoning Zone 81

DATA IS DEEMED RELIABLE BUT IS NOT GUARANTEED ACCURATE BY THE REALTORS® ASSOCIATION OF EDMONTON. COPYRIGHT 2025 BY THE REALTORS® ASSOCIATION OF EDMONTON. ALL RIGHTS RESERVED. Trademarks are owned or controlled by the Canadian Real Estate Association (CREA) and identify real estate professionals who are members of CREA (REALTOR®, REALTORS®) and/or the quality of services they provide (MLS®, Multiple Listing Service®)

Listing information last updated on August 19th, 2025 at 7:47am MDT