

\$479,700 - 108 Lamplight Drive, Spruce Grove

MLS® #E4453218

\$479,700

3 Bedroom, 2.50 Bathroom, 1,719 sqft

Single Family on 0.00 Acres

Legacy Park, Spruce Grove, AB

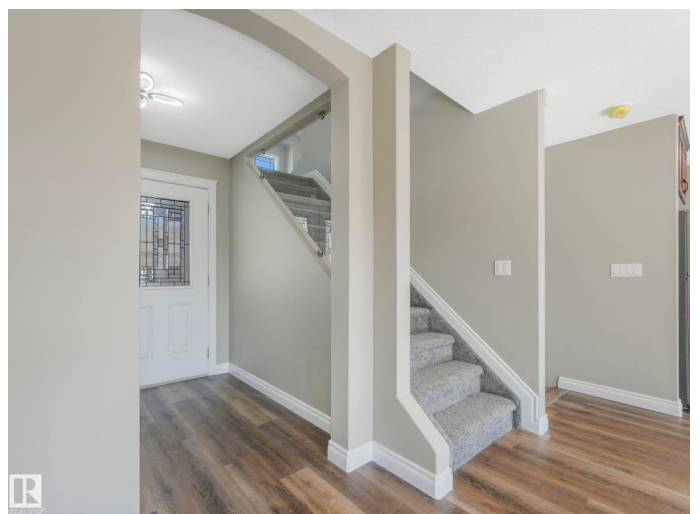
Custom built "Master Piece Home" located in a cul-de-sac in the neighborhood of Legacy Park! Big foyer greets you leading to a very bright living rm with gas fireplace & built-ins with new vinyl flooring. Kitchen has island, pantry, maple cabinets & roughed-in for a garburator. Half bathrm & laundry complete the main flr. Brand new carpet throughout upper floor which has a huge bonus rm with second fireplace, large windows & vaulted ceiling. There are 3 bdrms incl: master bedroom w/walk in closet & full ensuite. There is another full bathroom on the second floor. All the bdrms & the bonus rm are wired with CAT 5 cable. Bsmt is unfinished with rough in for full bathroom. Backyard is comparatively larger than other neighboring yards. This home has been freshly painted throughout & has a double attached garage that is insulated, drywalled & completely finished. Close to superstore, other shops & Tri-Leisure centre. Easy access to Hwy 16A & 16. SELLER FINANCING AVAILABLE WITHOUT CMHC CHARGES - CONDITIONS APPLY

Built in 2010

Essential Information

MLS® # E4453218

Price \$479,700



Bedrooms	3
Bathrooms	2.50
Full Baths	2
Half Baths	1
Square Footage	1,719
Acres	0.00
Year Built	2010
Type	Single Family
Sub-Type	Detached Single Family
Style	2 Storey
Status	Active

Community Information

Address	108 Lamplight Drive
Area	Spruce Grove
Subdivision	Legacy Park
City	Spruce Grove
County	ALBERTA
Province	AB
Postal Code	T7X 0G8

Amenities

Amenities	See Remarks
Parking Spaces	4
Parking	Double Garage Attached

Interior

Interior Features	ensuite bathroom
Appliances	Dishwasher-Built-In, Dryer, Refrigerator, Stove-Electric, Washer
Heating	Forced Air-1, Natural Gas
Fireplace	Yes
Fireplaces	Tile Surround
Stories	2
Has Basement	Yes
Basement	Full, Unfinished

Exterior

Exterior	Wood, Stone, Vinyl
Exterior Features	Cul-De-Sac, Fenced, Landscaped, No Back Lane, Shopping Nearby

Roof	Asphalt Shingles
Construction	Wood, Stone, Vinyl
Foundation	Concrete Perimeter

Additional Information

Date Listed August 15th, 2025

Days on Market 4

Zoning Zone 91

DATA IS DEEMED RELIABLE BUT IS NOT GUARANTEED ACCURATE BY THE REALTORS® ASSOCIATION OF EDMONTON. COPYRIGHT 2025 BY THE REALTORS® ASSOCIATION OF EDMONTON. ALL RIGHTS RESERVED. Trademarks are owned or controlled by the Canadian Real Estate Association (CREA) and identify real estate professionals who are members of CREA (REALTOR®, REALTORS®) and/or the quality of services they provide (MLS®, Multiple Listing Service®)

Listing information last updated on August 19th, 2025 at 7:47am MDT