

\$519,000 - 3109 110a Street, Edmonton

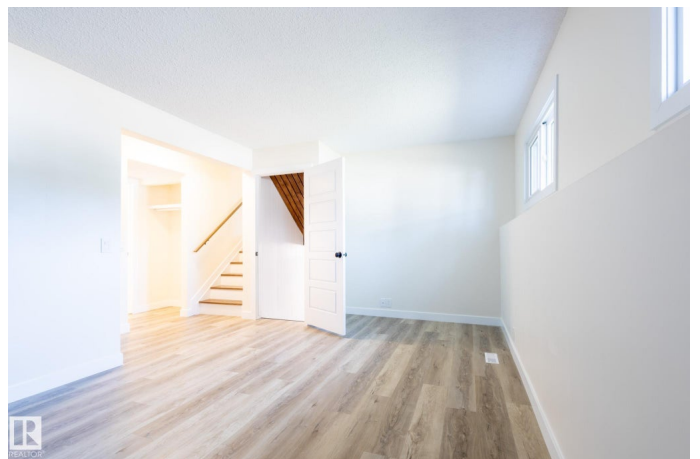
MLS® #E4457411

\$519,000

4 Bedroom, 2.00 Bathroom, 1,154 sqft
Single Family on 0.00 Acres

Steinhauer, Edmonton, AB

This beautifully renovated home offers over 1,800 sq. ft. of stylish, functional living space with modern upgrades throughout: New Roof Shingles (2023), Brand-New Windows (2024), Updated Garage Door (2024), New Furnace (2025) Step inside to a fully remodeled kitchen and bathrooms, complemented by sleek new flooring and a bright, open-concept layout. With 4 spacious bedrooms, 3 bathrooms, and 3 versatile living areas, there's plenty of room for family, entertaining, or relaxing. Natural light fills every corner, creating a warm and inviting atmosphere. Enjoy the huge private backyard, perfect for gatherings, gardening, or play and take advantage of the oversized garage with ample storage. Unbeatable Location! Walking distance to Century Park Station & an elementary school. Only 8 minutes to Southgate Centre. Quick access to Gateway Blvd, Calgary Trail, and Whitemud Drive. This home is a true gem, blending modern comfort with everyday convenience. Don't miss this incredible opportunity, priced to sell, so hurry!



Built in 1976

Essential Information

MLS® #	E4457411
Price	\$519,000

Bedrooms	4
Bathrooms	2.00
Full Baths	1
Half Baths	2
Square Footage	1,154
Acres	0.00
Year Built	1976
Type	Single Family
Sub-Type	Detached Single Family
Style	4 Level Split
Status	Active

Community Information

Address	3109 110a Street
Area	Edmonton
Subdivision	Steinhauer
City	Edmonton
County	ALBERTA
Province	AB
Postal Code	T6J 3E9

Amenities

Amenities	See Remarks
Parking	Double Garage Detached

Interior

Interior Features	ensuite bathroom
Appliances	Dishwasher-Built-In, Dryer, Garage Control, Garage Opener, Hood Fan, Refrigerator, Stove-Electric, Washer
Heating	Forced Air-1, Natural Gas
Stories	4
Has Basement	Yes
Basement	Full, Finished

Exterior

Exterior	Wood, Vinyl
Exterior Features	Playground Nearby, Public Transportation, Schools, Shopping Nearby
Roof	Asphalt Shingles
Construction	Wood, Vinyl

Foundation Concrete Perimeter

Additional Information

Date Listed September 12th, 2025

Days on Market 3

Zoning Zone 16

DATA IS DEEMED RELIABLE BUT IS NOT GUARANTEED ACCURATE BY THE REALTORS® ASSOCIATION OF EDMONTON. COPYRIGHT 2025 BY THE REALTORS® ASSOCIATION OF EDMONTON. ALL RIGHTS RESERVED. Trademarks are owned or controlled by the Canadian Real Estate Association (CREA) and identify real estate professionals who are members of CREA (REALTOR®, REALTORS®) and/or the quality of services they provide (MLS®, Multiple Listing Service®)

Listing information last updated on September 15th, 2025 at 1:17am MDT