

Courtesy Of John Lao Of Initia Real Estate

\$385,000 - 162 804 Welsh Drive, Edmonton

MLS® #E4459020

\$385,000

3 Bedroom, 2.50 Bathroom, 1,405 sqft
Condo / Townhouse on 0.00 Acres

Walker, Edmonton, AB

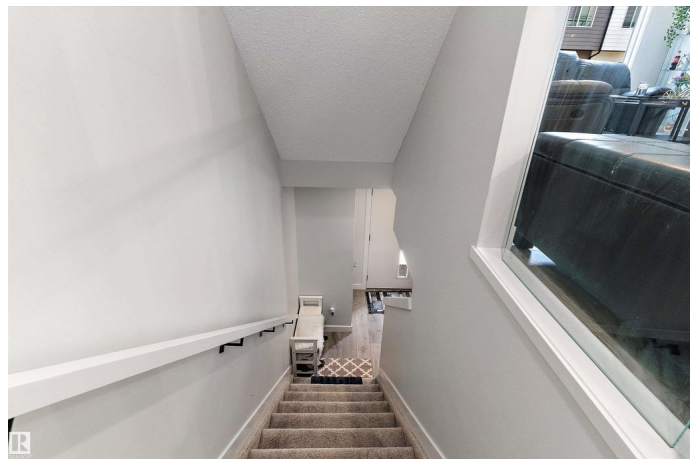
Modern townhome unit nestled in the desirable community of Walker. Built by Landmark Homes, this unit features 3 bedrooms plus a den, 2.5 baths and 2 car garage. Upon stepping into the main level, you will be greeted with an open concept layout with the kitchen boasting stainless steel appliances and quartz countertops. Also featuring a fenced front yard. Located close to shopping, amenities and highways.

Built in 2023

Essential Information

MLS® #	E4459020
Price	\$385,000
Bedrooms	3
Bathrooms	2.50
Full Baths	2
Half Baths	1
Square Footage	1,405
Acres	0.00
Year Built	2023
Type	Condo / Townhouse
Sub-Type	Townhouse
Style	3 Storey
Status	Active

Community Information



Address	162 804 Welsh Drive
Area	Edmonton
Subdivision	Walker
City	Edmonton
County	ALBERTA
Province	AB
Postal Code	T6X 1Y8

Amenities

Amenities	No Smoking Home, See Remarks
Parking Spaces	2
Parking	Double Garage Attached

Interior

Interior Features	ensuite bathroom
Appliances	Dishwasher-Built-In, Dryer, Microwave Hood Fan, Refrigerator, Stove-Electric, Washer
Heating	Forced Air-1, Natural Gas
Stories	3
Has Basement	Yes
Basement	None, No Basement

Exterior

Exterior	Wood, Vinyl
Exterior Features	Back Lane, Schools, Shopping Nearby
Roof	Asphalt Shingles
Construction	Wood, Vinyl
Foundation	Concrete Perimeter

Additional Information

Date Listed	September 23rd, 2025
Days on Market	24
Zoning	Zone 53
Condo Fee	\$156

DATA IS DEEMED RELIABLE BUT IS NOT GUARANTEED ACCURATE BY THE REALTORS® ASSOCIATION OF EDMONTON. COPYRIGHT 2025 BY THE REALTORS® ASSOCIATION OF EDMONTON. ALL RIGHTS RESERVED. Trademarks are owned or controlled by the Canadian Real Estate Association (CREA) and identify real estate professionals who are members of CREA (REALTOR®, REALTORS®) and/or the quality of services they provide (MLS®, Multiple Listing Service®)

Listing information last updated on October 17th, 2025 at 6:17pm MDT