

Courtesy Of Kalan M Savill Of RE/MAX River City

# \$475,000 - 1032 Mony Penny Crescent, Sherwood Park

MLS® #E4460673

**\$475,000**

3 Bedroom, 1.00 Bathroom, 1,001 sqft  
Single Family on 0.00 Acres

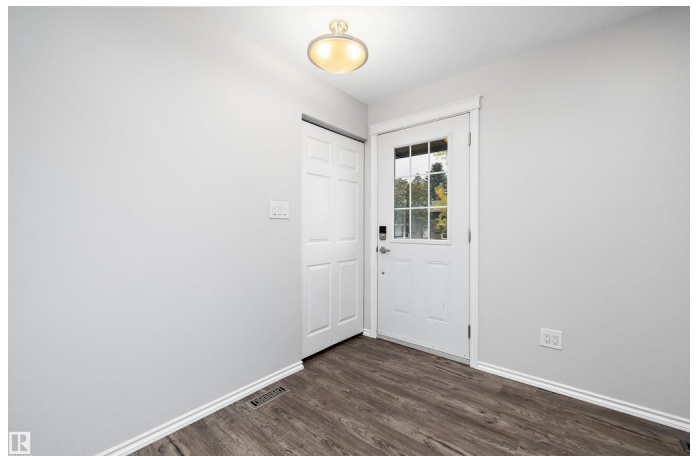
Westboro, Sherwood Park, AB

Beautifully renovated bungalow in the quiet community of Westboro, Sherwood Park! Just a short walk to parks, golf, schools & transit, with quick access to shopping, dining, and Edmonton's SW corridor. The main floor has been fully redone with newer windows, new doors, casings, baseboards, lighting, and a stunning open-concept kitchen featuring huge built-in pantry cabinets. Enjoy durable vinyl plank, tile, and carpet throughout. The brand-new bathroom boasts a tiled shower, oversized vanity, and built-in storage, while barn door closets add modern charm. Massive 613 square meter yard includes apple, saskatoon & cherry trees plus rhubarb and raspberries. Basement is accessible via side entry & is unfinished and ready for your vision, with R30 spray foamed exterior walls, rim joists, new electrical panel with copper wiring, newer HE furnace, and 2025 oversized 75-gal hot water tank. Rough-in plumbing for washroom. Immediate possession available—move right in! Some pictures virtually staged.

Built in 1970

## Essential Information

MLS® #	E4460673
Price	\$475,000



Lease Rate	\$17
Bedrooms	3
Bathrooms	1.00
Full Baths	1
Square Footage	1,001
Acres	0.00
Year Built	1970
Type	Single Family
Sub-Type	Detached Single Family
Style	Bungalow
Status	Active

### **Community Information**

Address	1032 Mony Penny Crescent
Area	Sherwood Park
Subdivision	Westboro
City	Sherwood Park
County	ALBERTA
Province	AB
Postal Code	T8A 1C3

### **Amenities**

Amenities	Off Street Parking, On Street Parking, Deck, No Animal Home, No Smoking Home, Parking-Extra, Vinyl Windows
Parking Spaces	3
Parking	Over Sized, Single Garage Detached

### **Interior**

Appliances	Dishwasher-Built-In, Garage Opener, Microwave Hood Fan, Refrigerator, Stove-Electric
Heating	Forced Air-1, Natural Gas
Stories	1
Has Basement	Yes
Basement	Full, Unfinished

### **Exterior**

Exterior	Wood, Vinyl
Exterior Features	Fenced, Flat Site, Fruit Trees/Shrubs, Landscaped, Low Maintenance Landscape, No Back Lane, Playground Nearby, Public Transportation,

Schools, Shopping Nearby, Treed Lot

Roof Asphalt Shingles  
Construction Wood, Vinyl  
Foundation Concrete Perimeter

### **School Information**

Elementary Westboro Elementary  
Middle Sherwood Heights  
High Salisbury Composite

### **Additional Information**

Date Listed October 3rd, 2025  
Days on Market 13  
Zoning Zone 25

DATA IS DEEMED RELIABLE BUT IS NOT GUARANTEED ACCURATE BY THE REALTORS® ASSOCIATION OF EDMONTON. COPYRIGHT 2025 BY THE REALTORS® ASSOCIATION OF EDMONTON. ALL RIGHTS RESERVED. Trademarks are owned or controlled by the Canadian Real Estate Association (CREA) and identify real estate professionals who are members of CREA (REALTOR®, REALTORS®) and/or the quality of services they provide (MLS®, Multiple Listing Service®)

Listing information last updated on October 16th, 2025 at 12:32pm MDT